

REVISED STARTING
SERIAL # 210410281



PARTS LIST MANUAL



GASOLINE MODEL CPU12



12" SELF-PROPELLED CRETE-PLANER®

SKU #	MODEL #	POWER OPTION
75700	CPU12-35K	KOHLER 35HP GASOLINE ENGINE MODEL CH980

**READ AND UNDERSTAND THE OPERATOR'S SAFETY MANUAL THOROUGHLY
BEFORE ATTEMPTING TO OPERATE THIS EQUIPMENT.**

Death or serious injury could occur if this machine is used improperly.

Machine specific Operator's Instruction Manuals are offered at edcoinc.com/customer-resources/manuals-parts-lists/
READ AND UNDERSTAND THE ENGINE MANUFACTURERS INSTRUCTIONS AND OPERATORS MANUAL BEFORE OPERATION.



EQUIPMENT DEVELOPMENT COMPANY, INC.

100 Thomas Johnson Drive, Frederick, MD 21702-4600 USA
Phone: 800-638-3326 or 301-663-1600 • Fax: 800-447-3326 or 301-663-1607
Website: www.edcoinc.com • E-mail: techsupport@edcoinc.com

Printed in USA
JWA ©2021

**SAFETY INFORMATION****SAFETY MESSAGES**

• Safety Instructions are preceded by a graphic alert symbol of DANGER, WARNING, or CAUTION.



Indicates an imminent hazard which, if not avoided, will result in death or serious injury.



Indicates an imminent hazard which, if not avoided, can result in death or serious injury.



Indicates hazards which, if not avoided, could result in serious injury and or damage to the equipment.

GASOLINE / PROPANE POWERED EQUIPMENT

• Engine exhaust from this product contains chemicals known to the State of California to cause cancer, birth defects or other reproductive harm.



• Tilting a gasoline powered machine fitted with an EPA approved vented charcoal filter gas cap, beyond 20° can cause fuel leakage. If a leak occurs, do not

start or run the engine until the leak is fixed. Eliminate all other ignition sources in the immediate area (no smoking, flares, sparks or flames). Use approved gasoline absorbing material to contain the fuel leakage. Then use clean, non-sparking tools to collect absorbed materials then dispose of these contaminants properly.



• Gasoline is extremely flammable and poisonous. It should only be dispensed in well ventilated areas, and with a cool engine.

• Small gasoline engines produce high concentrations of carbon monoxide (CO) example: a 5 HP 4 cycle engine operation in an enclosed 100,000 cu. ft. area with only one change of air per hour is capable of providing deadly concentrations of CO in less than fifteen minutes. Five changes of air in the same area will produce noxious fumes in less than 30 minutes. Gasoline powered equipment should not be used in enclosed or partially enclosed areas. Symptoms of CO poisoning include, head-ache, nausea, weakness, dizziness, visual problems and loss of consciousness. If symptoms occur - get into fresh air and seek medical attention immediately.

- Never refuel a hot engine or an engine while it is running.
- Engines are shipped from factory without fuel/oil.



• Propane is extremely flammable and is heavier than air and tends to settle in low areas where a spark or flame could ignite gas. DO NOT start or operate this propane engine in a poorly ventilated area where leaking propane gas could accumulate and endanger safety of persons in area. If headache develops, shut off machine. Have it checked for carbon monoxide emissions by a qualified technician before using it again. To ensure personal safety, installation and repair of propane fuel supply systems must be performed only by qualified technicians. Carbon monoxide emissions from this machine are greatly increased due to a dirty combustion air cleaner.

ELECTRICAL POWERED EQUIPMENT

Extreme care must be taken when operating electric models with water present: Ensure power cord is properly grounded, is attached to a Ground-Fault-Interrupter (GFI) outlet, and is undamaged.

- Check all electrical cables - be sure connections are tight and cable is continuous and in good condition. Be sure cable is correctly rated for both the operating current and voltage of this equipment.
- Improper connection of the equipment grounding conductor can result in a risk of electric shock. Check with qualified electrician or service person if there is any doubt as to whether the outlet is properly grounded. Adhere to all local codes and ordinances.
- NOTE: In the event of a malfunction or breakdown, grounding provides a path of least resistance for the electric current to dissipate. The motor is equipped with a grounded plug and must be connected to an outlet that is properly installed and properly grounded. DO NOT modify the plug provided on the motor. If the plug does not fit the outlet have a qualified electrician install the proper receptacle.

ELECTRICAL POWERED EQUIPMENT CONTINUED

- Do not disconnect power by pulling cord. To disconnect, grasp the plug, not the cord.
- Unplug power cord at the machine when not in use and before servicing.
- Switch motor OFF before disconnecting power.
- Never use frayed, damaged, taped or under rated extension cords. Electrical shock could result in death or serious injury to the operator and damage to the equipment.
- Assure you are using the proper extension cord length.

GENERAL INSTRUCTIONS

- Equipment should only be operated by trained personnel in good physical condition and mental health (not fatigued). The operator and maintenance personnel must be physically able to handle the bulk weight and power of this equipment.
- This is a one person tool. Maintain a safe operating distance to other personnel. It is the operators' responsibility to keep other people (workers, pedestrians, bystanders, etc.) away during operation. Block off the work area in all directions with roping, safety netting, etc. Failure to do so may result in others being injured by flying debris or exposing them to harmful dust and noise.
- This equipment is intended for commercial use only.
- For the operator's safety and the safety of others, always keep all guards in place during operation.
- Never let equipment run unattended.



- Personal Protection Equipment and proper safety attire must be worn when operating this machinery. The operator must wear approved safety equipment appropriate for the job such as hard hat and safety shoes when conditions require. Hearing protection **MUST** be used when operational noise levels of this equipment may exceed 85db. Eye protection **MUST** be worn at all times.



Keep body parts, loose clothing and accessories away from moving parts. Failure to do so could result in dismemberment or death.

- Do not modify the machine.
- Stop motor/engine when adjusting or servicing this equipment. Maintain a safe operating distance from flammable materials. Sparks from the cutting-action of this machine can ignite flammable materials or vapors.

**DUST WARNING**

Some dust created by power sanding, sawing, grinding, drilling, and other construction activities contains chemicals known to cause cancer, birth defects, or other reproductive harm. Materials being removed can be toxic or hazardous. A breathing respirator is required to help protect the operator.

Some examples of these chemicals are:

- Lead from lead-based paints.
- Crystalline silica from bricks, concrete and other masonry products. Your risk of exposure to these chemicals varies depending on how often you do this type of work. To reduce your risk: work in a well ventilated area, use a dust control system, such as an industrial-style vacuum, and wear approved personal safety equipment, such as a dust/particle respirator designed to filter out microscopic particles.
- See more on the importance of dust prevention and silica warnings at: osha.gov/silica
- More concrete and silica dust suppression training and educational materials available at edcoinc.com/silica-standards or scan the QR code on page 5.
- Written exposure plans are provided at <http://www.edcoinc.com/written-exposure-control-plans/>

PARTS LIST MANUAL

GASOLINE MODEL CPU12

12" SELF-PROPELLED CRETE-PLANER®

TABLE OF CONTENTS

<u>Section</u>	<u>Page Number</u>
Safety Information	2
How To Order Replacement Parts	3
Illustration 1: Frame & Console Grouping	4, 5
Illustration 2: Lifting System Grouping for Outrigger Front Wheels	6, 7
Illustration 3: Hydraulic Pump Grouping	8, 9
Illustration 4: Rear Axle & Jackshaft Grouping	10, 11
Illustration 5: Transmission, Drive Lever & Linkage Grouping	12, 13
Illustration 6: 5th Wheel Grouping	14, 15
Illustration 7: Water Valve & Hose Grouping	17
Illustration 8: Bearing Grouping for Cutter Drum	18
Illustration 9: Cutter Drum Assembly	19
Illustration 10: Engine & Mount Grouping	20, 21
Illustration 11: Fuel Tank Grouping	22
Illustration 12: Battery Grouping	23
Illustration 13: Idler Arm Grouping for Transmission Belt	24
Illustration 14: Belt Drive Grouping	25
Illustration 15: Belt Cover Grouping	26, 27
Illustration 16: Lifting Bail Grouping	28
Illustration 17: Instrument Grouping	29
Wiring Diagram	31
Decals	32, 33
Limited Equipment Warranty of Sale	35
STOP - Before Using This Product	36

HOW TO ORDER REPLACEMENT PARTS

- ☐ To insure product safety and reliability, always use genuine EDCO replacement parts when making repairs to the equipment.
- ☐ When calling for parts, specify the MODEL and SERIAL number of the machine, which can be found on the NAME PLATE. Keep that information in the space provided. In addition to this information, give part number, description, and quantity as listed on the parts list to your parts representative.
- ☐ Please note: Due to improvements and changes in the equipment, the illustrations shown may be different than the actual machine.

FILL IN INFORMATION BELOW

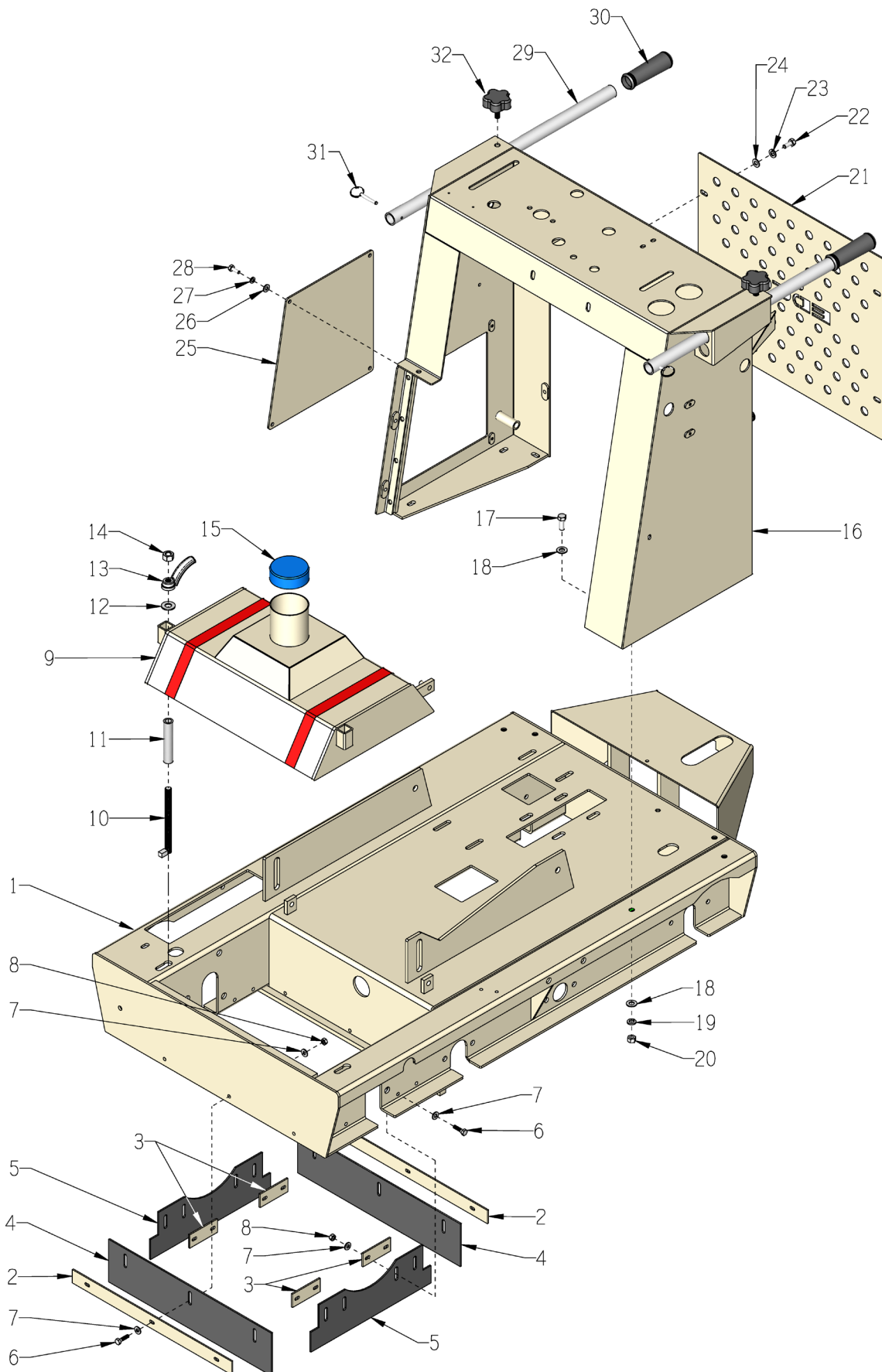
Date of Purchase _____

Model # _____

Serial # _____

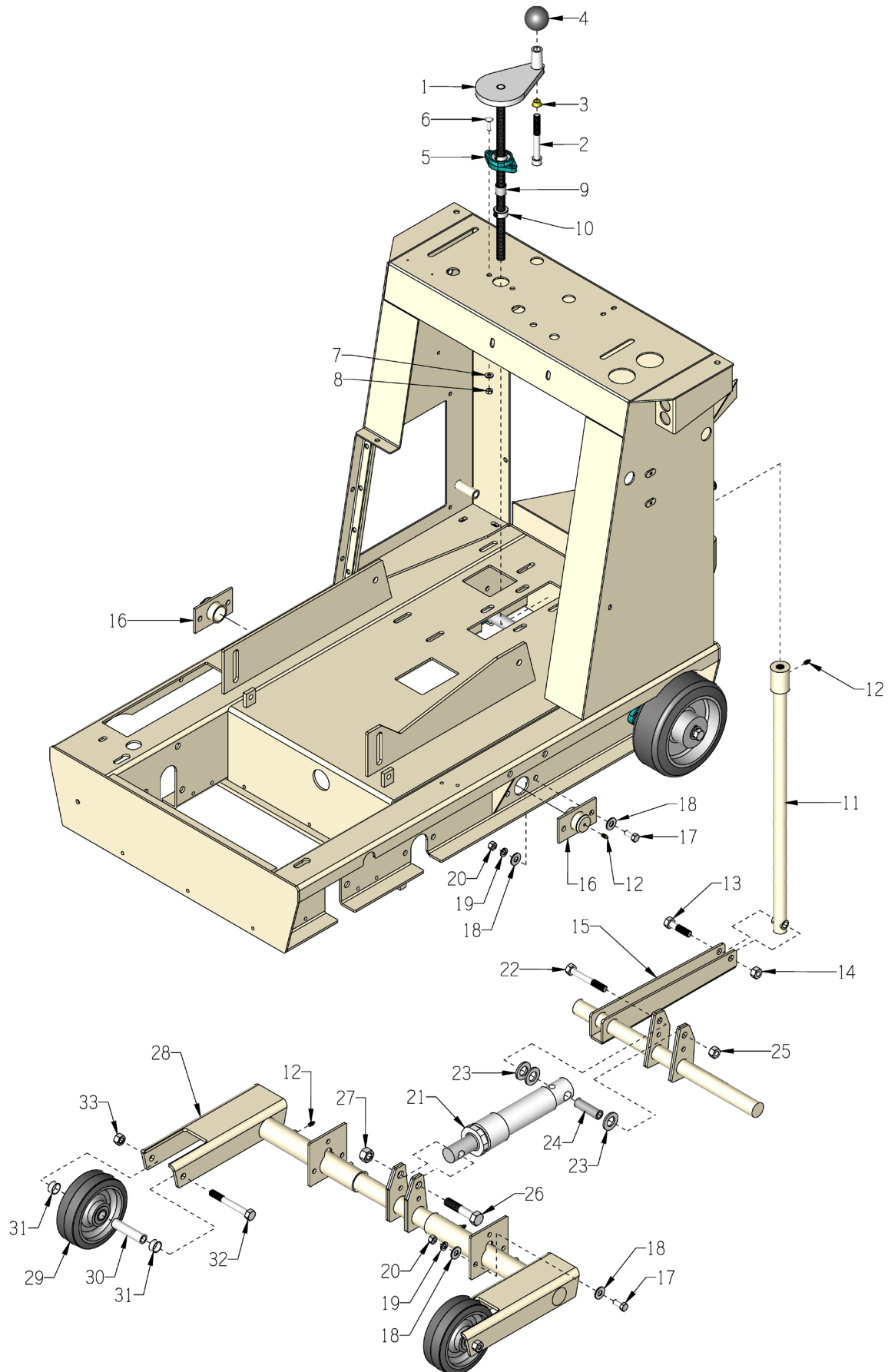
SKU # _____

ILLUSTRATION 1: FRAME & CONSOLE GROUPING



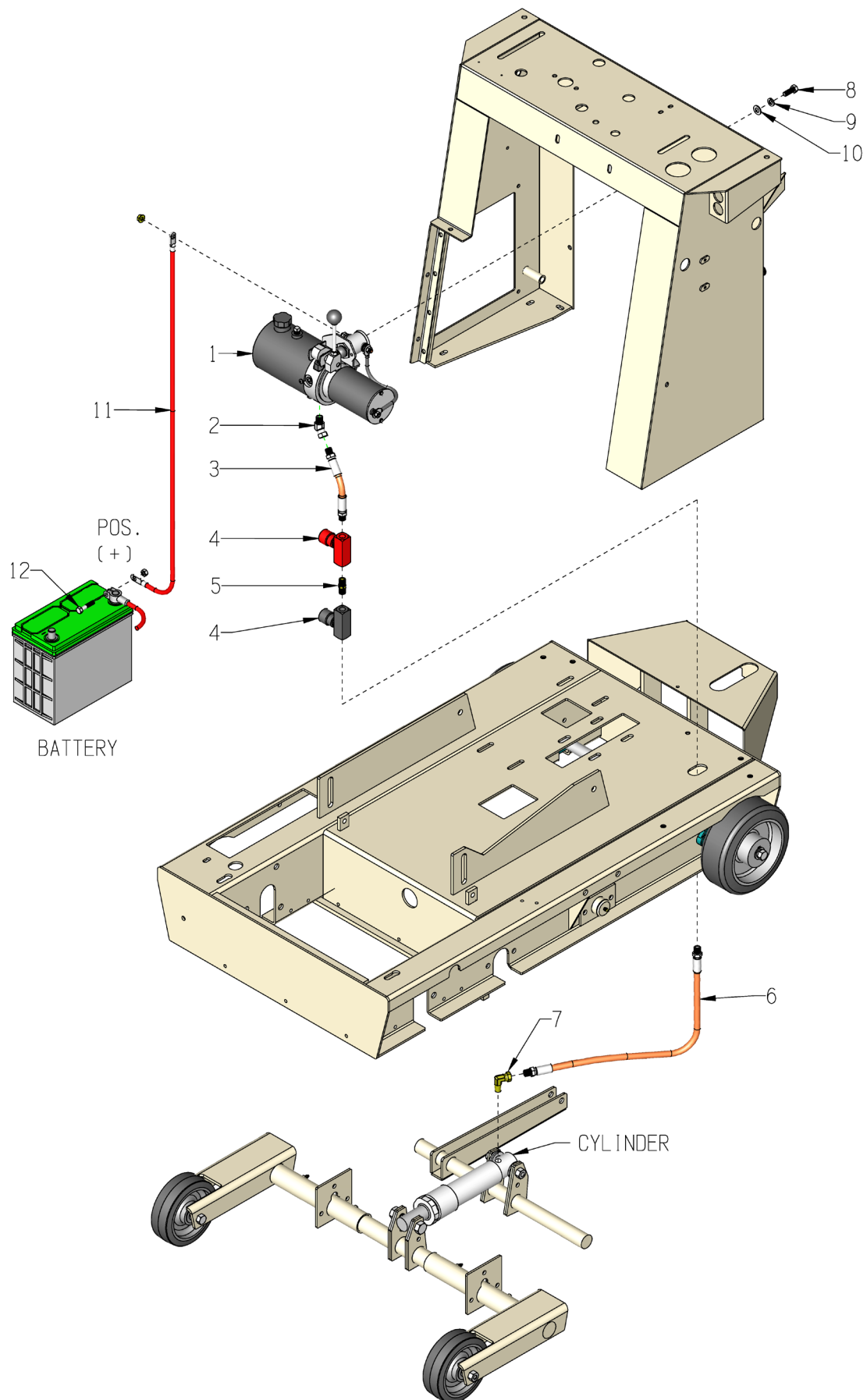
PARTS LISTING			
ILLUSTRATION 1: FRAME & CONSOLE GROUPING			
ITEM #	PART #	DESCRIPTION	QTY.
1	61213	MAIN FRAME, CPU-12	1
2	61326	RETAINING STRIP, F/R SEAL, CPU-12	2
3	61327	RETAINING STRIP, SIDE SEAL, CPU-12	4
4	61328	RUBBER SEAL, FRONT/REAR, CPU-12	2
5	61329	RUBBER SEAL, SIDE, CPU-12	2
6	10031	SCREW, CAP 1/4-20 X 1	14
7	10602	WASHER, FLAT 1/4 SAE ZINC	28
8	10150	NUT, HEX NYLON LOCK 1/4-20 ZINC	14
9	61307	HOOD W/ 3" EXHAUST PORT, CPU-12	1
10	61210	ROD, ALLTHREAD 1/2-13 HOOD LATCH	2
11	61208	TUBE, HOOD LATCH 3/4"OD X 3-3/4"L	2
12	10312	WASHER, FLAT 1/2 SAE ZINC	2
13	40358	NUT, TAIL HANDLE 1/2-13	2
14	10407	NUT, HEX LOCK 1/2-13 ZINC	2
15	64030	CAP, END 3" BLUE PLASTIC	1
16	61304K	CONSOLE, CPU12-35K	1
17	10021	SCREW, CAP 3/8-24 X 1 ZINC	6
18	10025	WASHER, FLAT 3/8 SAE ZINC	12
19	10811	WASHER, LOCK 3/8 ZINC	6
20	10014	NUT, HEX 3/8-24 ZINC	6
21	61305	PANEL, REAR, CPU12	1
22	10806	SCREW, CAP 5/16-18 X 1	4
23	10801	WASHER, LOCK 5/16 ZINC	4
24	10213	WASHER, FLAT 5/16 SAE ZINC	4
25	61003	DOOR, CONSOLE SIDE ACCESS, CPU-12	1
26	10602	WASHER, FLAT 1/4 SAE ZINC	4
27	10038	WASHER, LOCK 1/4 ZINC	4
28	10018	SCREW, CAP 1/4-20 X 3/4	4
29	51024	HANDLE BAR 24", ZINC PLATED	2
30	10608	GRIP, HAND 1" MODEL AT	2
31	10145	PIN, DETENT RING 3/16 X 1-5/16 E.L.	2
32	51230	KNOB, STAR CLAMPING 3/8-16 X 1"STUD	2

ILLUSTRATION 2: LIFTING SYSTEM GROUPING FOR OUTRIGGER FRONT WHEELS



PARTS LISTING - ILLUSTRATION 2: LIFTING SYSTEM GROUPING FOR OUTRIGGER FRONT WHEELS			
ITEM #	PART #	DESCRIPTION	QTY.
1	75004	HANDWHEEL, LARGE W/ 5/8-8 X 16"ROD	1
2	10411	SCREW, SKT. HD. CAP 1/2-13 X 4 ZINC	1
3	50550	SLEEVE, BRASS 1/2" TAPERED	1
4	10104	KNOB, BALL 1-7/8 W/ 1/2-13THD, BLK.	1
5	80009	BEARING, BALL 5/8" 2-HOLE (NO G.F.)	1
6	10412	BOLT, CARRIAGE 1/4-20 X 1	2
7	10602	WASHER, FLAT 1/4 SAE ZINC	2
8	10861	NUT, KEPS LOCK 1/4-20 ZINC	2
9	55010	SPACER, HANDWHEEL 5/8"ID X 3/4"L	1
10	10096	COLLAR, LOCKING 5/8"ID	1
11	61214	LINKAGE, LOWER CONTROL 25"L, CPU-12	1
12	10808	FITTING, GREASE 1/4-28 STRAIGHT	7
13	10322	SCREW, CAP 1/2-20 X 2	1
14	10205	NUT, HEX LOCK 1/2-20 ZINC	1
15	61218	ARM, CYLINDER CONTROL, CPU-12	1
16	61219	SUPPORT, PIVOT, CPU-12	2
17	10021	SCREW, CAP 3/8-24 X 1	10
18	10025	WASHER, FLAT 3/8 SAE ZINC	20
19	10811	WASHER, LOCK 3/8 ZINC	10
20	10014	NUT, HEX 3/8-24 ZINC	10
21	61020	CYLINDER, HYDRAULIC	1
22	10324	SCREW, CAP 1/2-13 X 3-1/2	1
23	10009	WASHER, FLAT 3/4 SAE ZINC	3
24	61217	TUBE, CYL. 3/4"OD X 2-5/16, CPU-12	1
25	10407	NUT, HEX LOCK 1/2-13 ZINC	1
26	10326	SCREW, CAP 5/8-11 X 3	1
27	10809	NUT, HEX LOCK 5/8-11 ZINC	1
28	61216	FORK, OUTRIGGER, CPU-12	1
29	50030	WHEEL 6 X 2 X 3/4"BRG.,ALUM./RUBBER	2
30	61048	AXLE TUBE 3/4ODX1/2IDX3-1/16, CPU12	2
31	61047	SPACER, WHEEL 3/4"ID X 13/32, CPU12	4
32	81001	SCREW, CAP 1/2-13 X 4	2
33	10407	NUT, HEX LOCK 1/2-13 ZINC	2

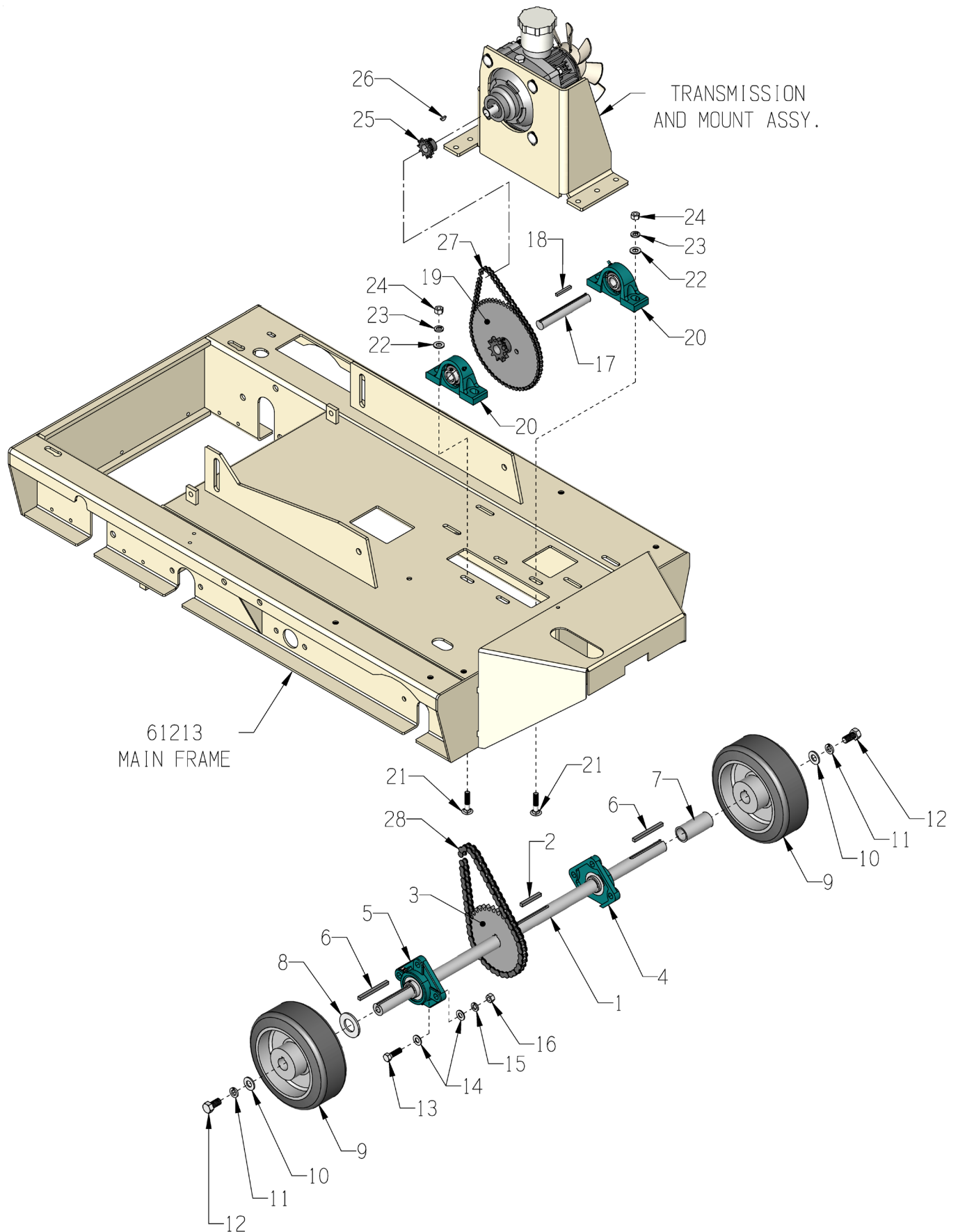
ILLUSTRATION 3: HYDRAULIC PUMP GROUPING



PARTS LISTING
ILLUSTRATION 3: HYDRAULIC PUMP GROUPING

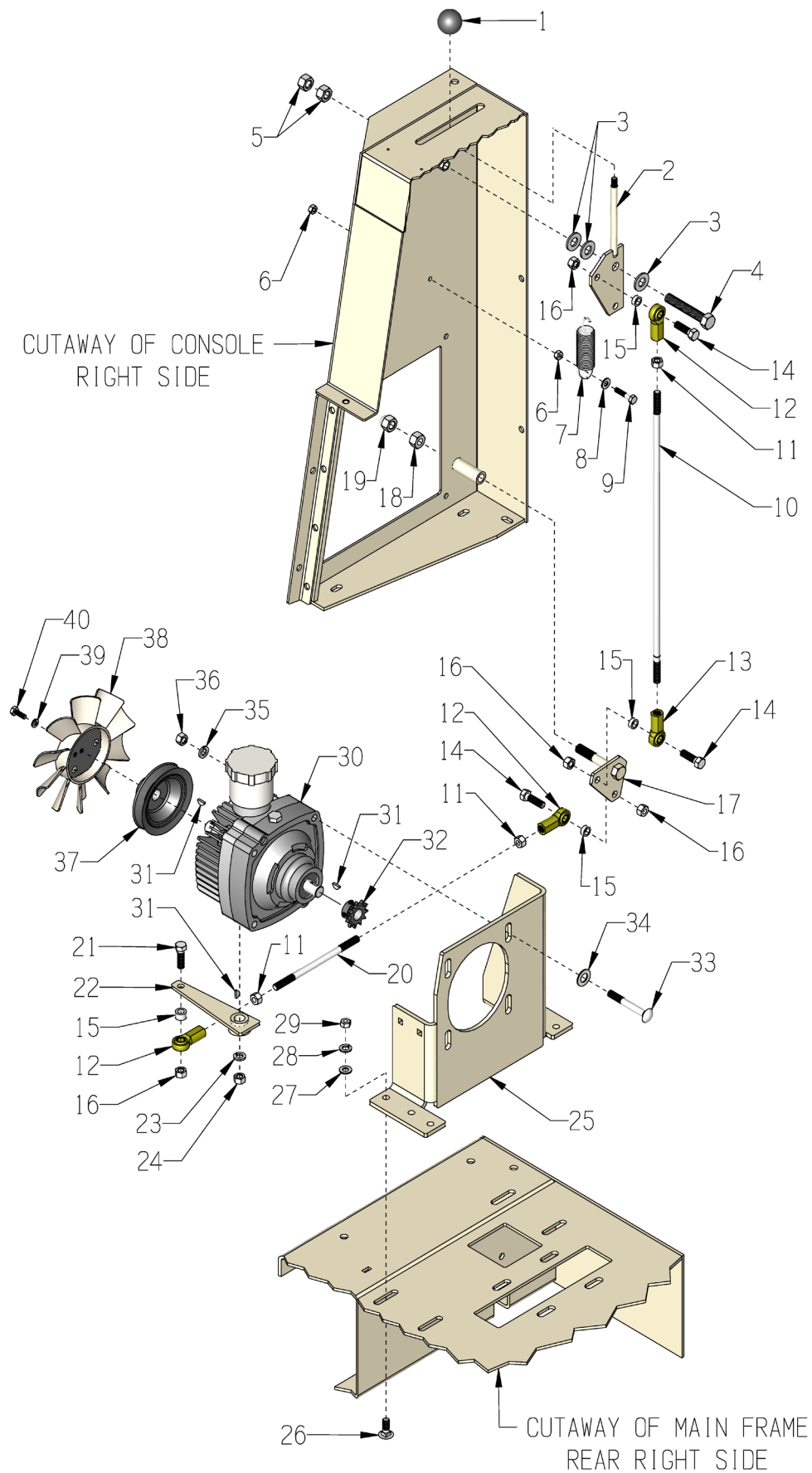
ITEM #	PART #	DESCRIPTION	QTY.
1	50227	PUMP, HYDRAULIC ELEC., 12VDC M-301	1
2	10710	FITTING, SWIVEL 45, 1/4NPT HYD.	1
3	57078	HOSE, HYDRAULIC 1/4NPT X 6-1/2"LOA	1
4	61116	VALVE, FLOW CONTROL	2
5	10717	NIPPLE, HEX 1/4 NPT (BRASS)	1
6	61215	HOSE, HYDRAULIC 1/4NPT X 27-1/2"LOA	1
7	10709	FITTING, SWIVEL 90, 1/4NPT HYD.	1
8	10055	SCREW, CAP 3/8-16 X 1	2
9	10811	WASHER, LOCK 3/8 ZINC	2
10	10025	WASHER, FLAT 3/8 SAE ZINC	2
11	61064	CABLE, EYE-EYE 4GA. X 40" (RED)	1
12	10342	SCREW, CAP 5/16-18 X 1-1/2	1

ILLUSTRATION 4: REAR AXLE & JACKSHAFT GROUPING



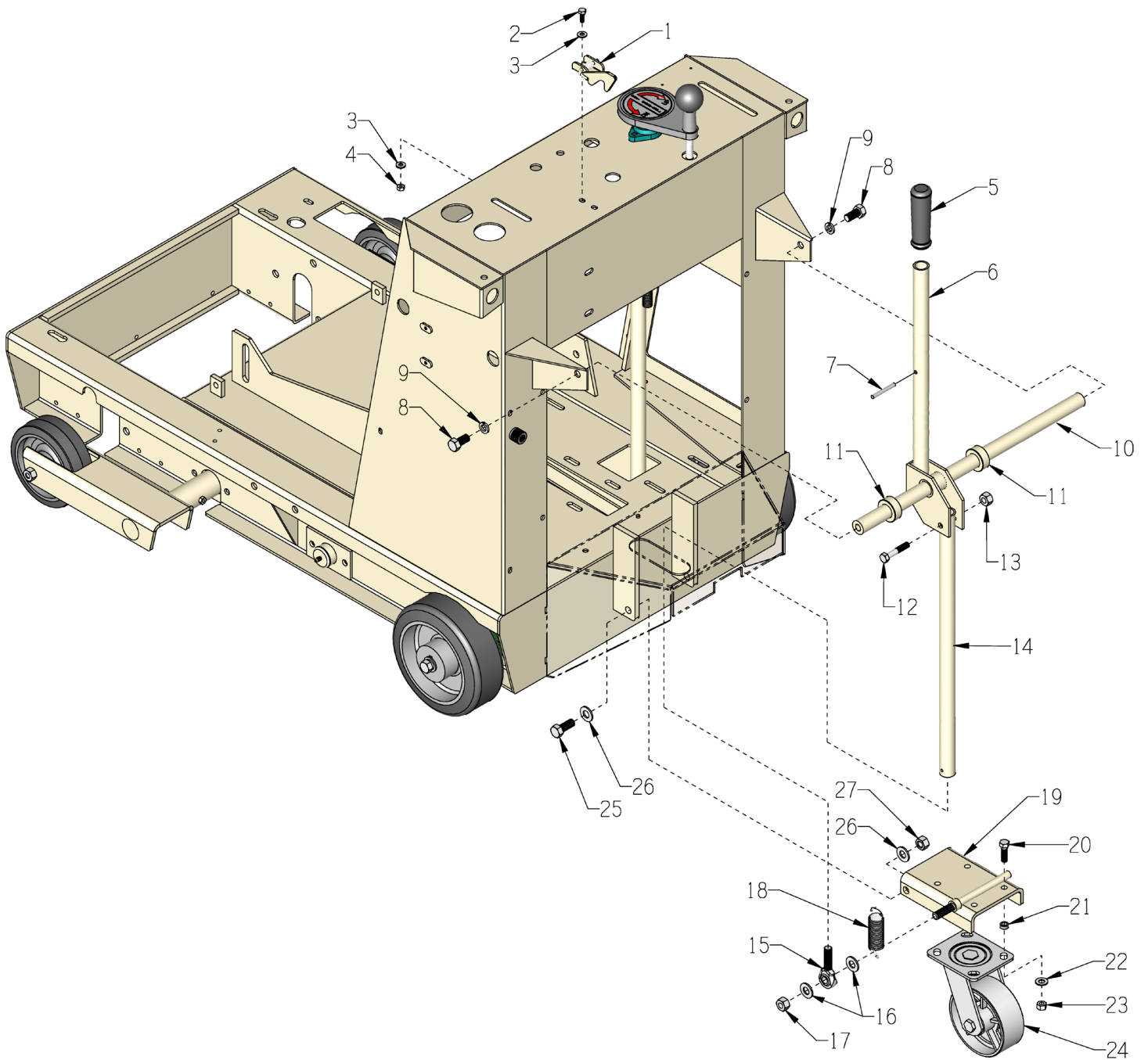
PARTS LISTING			
ILLUSTRATION 4: REAR AXLE & JACKSHAFT GROUPING			
ITEM #	PART #	DESCRIPTION	QTY.
1	61228	AXLE SHAFT 1"DIA. X 30"L, CPU-12	1
2	10115	KEY 1/4SQ X 2	1
3	61126	SPROCKET #40B34 X 1"BORE	1
4	61052R	BEARING, BALL 1" MODIFIED 3-HOLE RIGHT SIDE	1
5	61052L	BEARING, BALL 1" MODIFIED 3-HOLE LEFT SIDE	1
6	10132	KEY 1/4SQ X 3	2
7	61231	SPACER, WHEEL 1"ID X 2-3/4"L	1
8	10008	WASHER, FLAT 1" SAE ZINC	1
9	61065	WHEEL 8 X 3 X 1"BORE	2
10	10312	WASHER, FLAT 1/2 SAE ZINC	2
11	10045	WASHER, LOCK 1/2 ZINC	2
12	10914	SCREW, CAP 1/2-13 X 1	2
13	10309	SCREW, CAP 3/8-24 X 1-1/4 ZINC	6
14	10025	WASHER, FLAT 3/8 SAE ZINC	12
15	10811	WASHER, LOCK 3/8 ZINC	6
16	10014	NUT, HEX 3/8-24 ZINC	6
17	61053	JACKSHAFT 3/4"DIA. X 5"L, CPU-12	1
18	10016	KEY 3/16SQ X 1-1/2	1
19	61124	SPROCKET, DUAL #3560-4010, CPU-12	1
20	50045	BEARING, BALL 3/4" PILLOW BLOCK	2
21	10804	BOLT, CARRIAGE 3/8-16 X 1-1/2	4
22	10025	WASHER, FLAT 3/8 SAE ZINC	4
23	10811	WASHER, LOCK 3/8 ZINC	4
24	10404	NUT, HEX 3/8-16 ZINC	4
25	50048	SPROCKET #3511 X .67"BORE	1
26	50071	KEY, WOODRUFF 1/8 X 1/2 (SAE #3)	1
27	61229	CHAIN #35 X 26-1/8" + CL, CPU-12	1
28	61230	CHAIN #40 X 24-13/16" + CL, CPU-12	1

ILLUSTRATION 5: TRANSMISSION, DRIVE LEVER & LINKAGE GROUPING



PARTS LISTING			
ILLUSTRATION 5: TRANSMISSION, DRIVE LEVER & LINKAGE GROUPING			
ITEM #	PART #	DESCRIPTION	QTY.
1	10920	KNOB, BALL 1-3/8 W/ 5/16-24THD, BLK	1
2	61221	LEVER, DRIVE, CPU-12	1
3	10312	WASHER, FLAT 1/2 SAE ZINC	3
4	10340	BOLT, TAP 1/2-13 X 3 (FULL THREAD)	1
5	10417	NUT, HEX 1/2-13 ZINC	2
6	10013	NUT, HEX 1/4-20 ZINC	2
7	50074	SPRING, EXT. 1"OD X 3-15/16	1
8	10602	WASHER, FLAT 1/4 SAE ZINC	1
9	10905	SCREW, CAP 1/4-20 X 1-1/4	1
10	61223	LINKAGE, ROD 3/8 X 19-1/4"L	1
11	10014	NUT, HEX 3/8-24 ZINC	3
12	10919	ROD END, FEMALE 3/8-24 R.H. THREAD	3
13	10919L	ROD END, FEMALE 3/8-24 L.H. THREAD	1
14	10816	SCREW, CAP 3/8-24 X 1-1/2	3
15	10011	SPACER, STEEL 5/8OD X 3/8ID X 3/8T	4
16	10004	NUT, HEX LOCK 3/8-24 ZINC	4
17	61038	PIVOT LINKAGE CONNECTOR, TRANS.	1
18	10205	NUT, HEX LOCK 1/2-20 ZINC	1
19	10422	NUT, ACORN 1/2-20	1
20	61224	LINKAGE, ROD 3/8 X 6-1/2"L	1
21	10816	SCREW, CAP 3/8-24 X 1-1/2	1
22	61225	TRANS., CONTROL ARM, CPU12	1
23	10811	WASHER, LOCK 3/8 ZINC	1
24	10404	NUT, HEX 3/8-16 ZINC	1
25	61255	MOUNT, TRANSMISSION, CPU12	1
26	10819	BOLT, CARRIAGE 5/16-18 X 1 FULL THD	4
27	10213	WASHER, FLAT 5/16 SAE ZINC	4
28	10801	WASHER, LOCK 5/16 ZINC	4
29	10054	NUT, HEX 5/16-18 ZINC	4
30	50061	TRANSMISSION, HYDROSTATIC	1
31	50071	KEY, WOODRUFF 1/8 X 1/2 (SAE #3)	3
32	50048	SPROCKET #3511 X .67"BORE	1
33	10909	BOLT, CARRIAGE 3/8-16 X 3 ZINC	4
34	10040	WASHER, GARRET 17/32 X 1 X .054	4
35	10811	WASHER, LOCK 3/8 ZINC	4
36	10404	NUT, HEX 3/8-16 ZINC	4
37	50062	SHEAVE, TRANS. 4"OD X 1GR. X .671"B	1
38	50266	FAN BLADE W/ PLATE 7", TRANSMISSION	1
39	10038	WASHER, LOCK 1/4 ZINC	1
40	10834	SCREW, CAP 1/4-20 X 1/2 ZINC	1

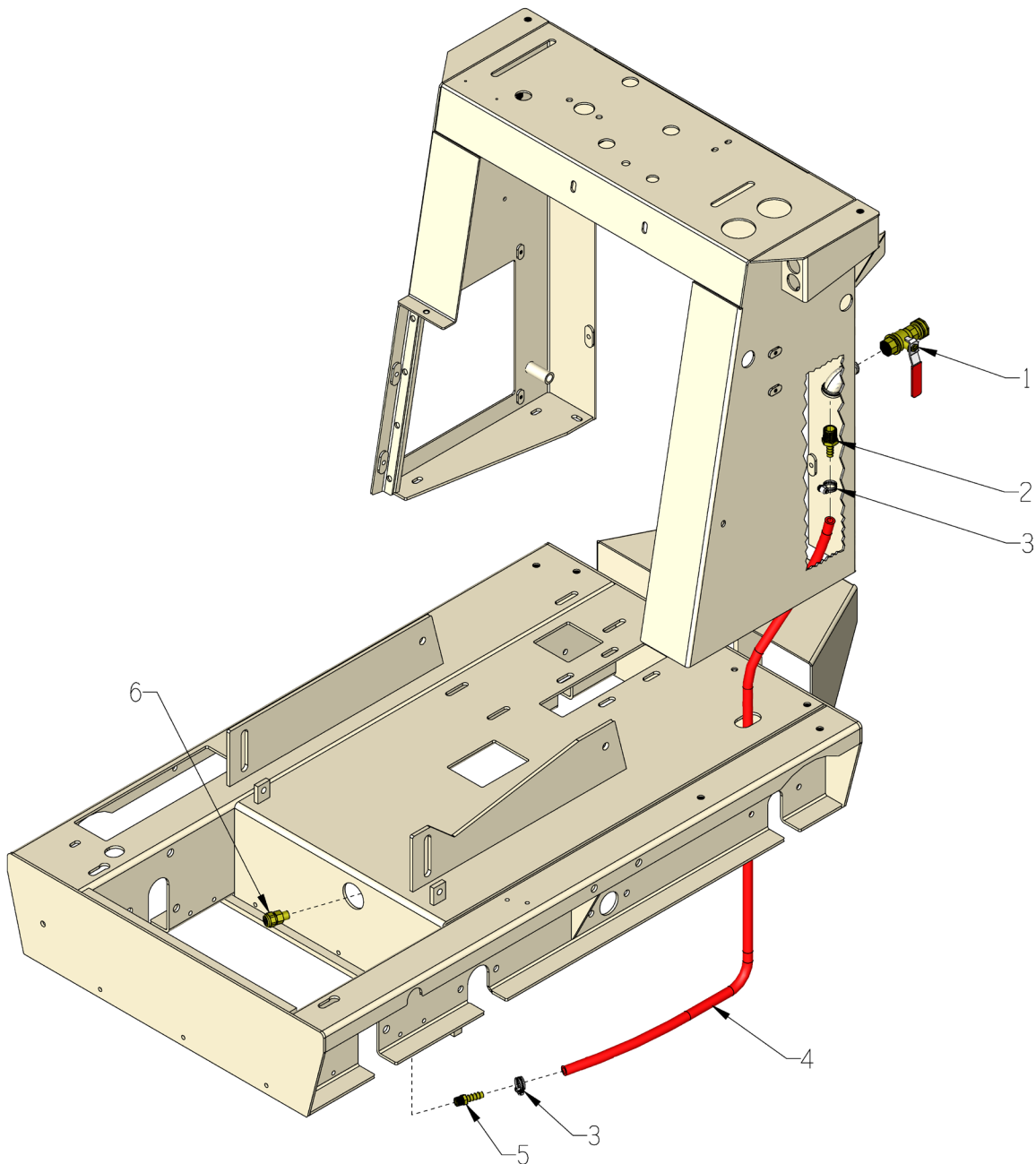
ILLUSTRATION 6: 5th WHEEL GROUPING



PARTS LISTING ILLUSTRATION 6: 5th WHEEL GROUPING			
ITEM #	PART #	DESCRIPTION	QTY.
1	61202	LATCH, REAR CASTER LEVER, CPU-12	1
2	10018	SCREW, CAP 1/4-20 X 3/4	1
3	10602	WASHER, FLAT 1/4 SAE ZINC	2
4	10861	NUT, KEPS LOCK 1/4-20 ZINC	1
5	10608	GRIP, HAND 1" MODEL AT	1
6	61110	LEVER, REAR CASTER, CPU-12	1
7	50072	PIN, ROLL 1/4 X 2	1
8	10304	SCREW, CAP 1/2-20 X 1	2
9	10045	WASHER, LOCK 1/2 ZINC	2
10	61205	SHAFT 1"RD X 20-3/8"L, CPU-12	1
11	10427	COLLAR, LOCKING 1"ID	2
12	10030	SCREW, CAP 3/8-24 X 2	1
13	10004	NUT, HEX LOCK 3/8-24 ZINC	1
14	61206	LINKAGE, REAR CASTER, CPU-12	1
15	4805	ROD END, MALE 1/2-20	1
16	10312	WASHER, FLAT 1/2 SAE ZINC	2
17	10407	NUT, HEX LOCK 1/2-13 ZINC	1
18	50074	SPRING, EXT. 1"OD X 3-15/16	1
19	61120	CARRIAGE, CASTER BASE, CPU-12	1
20	10309	SCREW, CAP 3/8-24 X 1-1/4 ZINC	4
21	10113	SPACER, STEEL 9/16OD X 3/8ID X 7/32	4
22	10025	WASHER, FLAT 3/8 SAE ZINC	4
23	10004	NUT, HEX LOCK 3/8-24 ZINC	4
24	61121	CASTER, SWIVEL W/ 5" C.I. WHEEL	1
25	10321	SCREW, CAP 1/2-20 X 1-1/4	2
26	10312	WASHER, FLAT 1/2 SAE ZINC	4
27	10205	NUT, HEX LOCK 1/2-20 ZINC	2

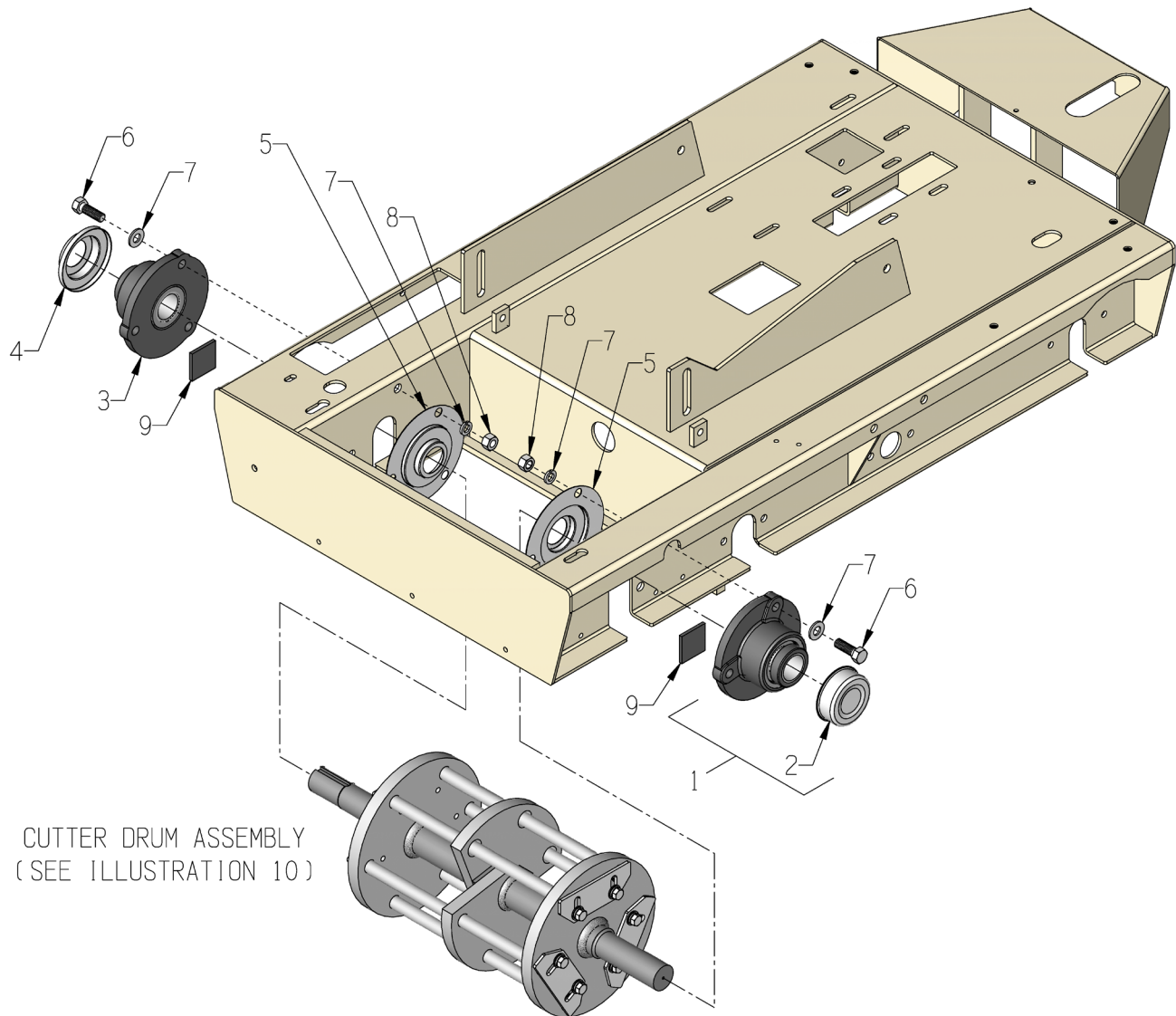
THIS PAGE WAS LEFT BLANK INTENTIONALLY

ILLUSTRATION 7: WATER VALVE & SPRAY NOZZLE GROUPING



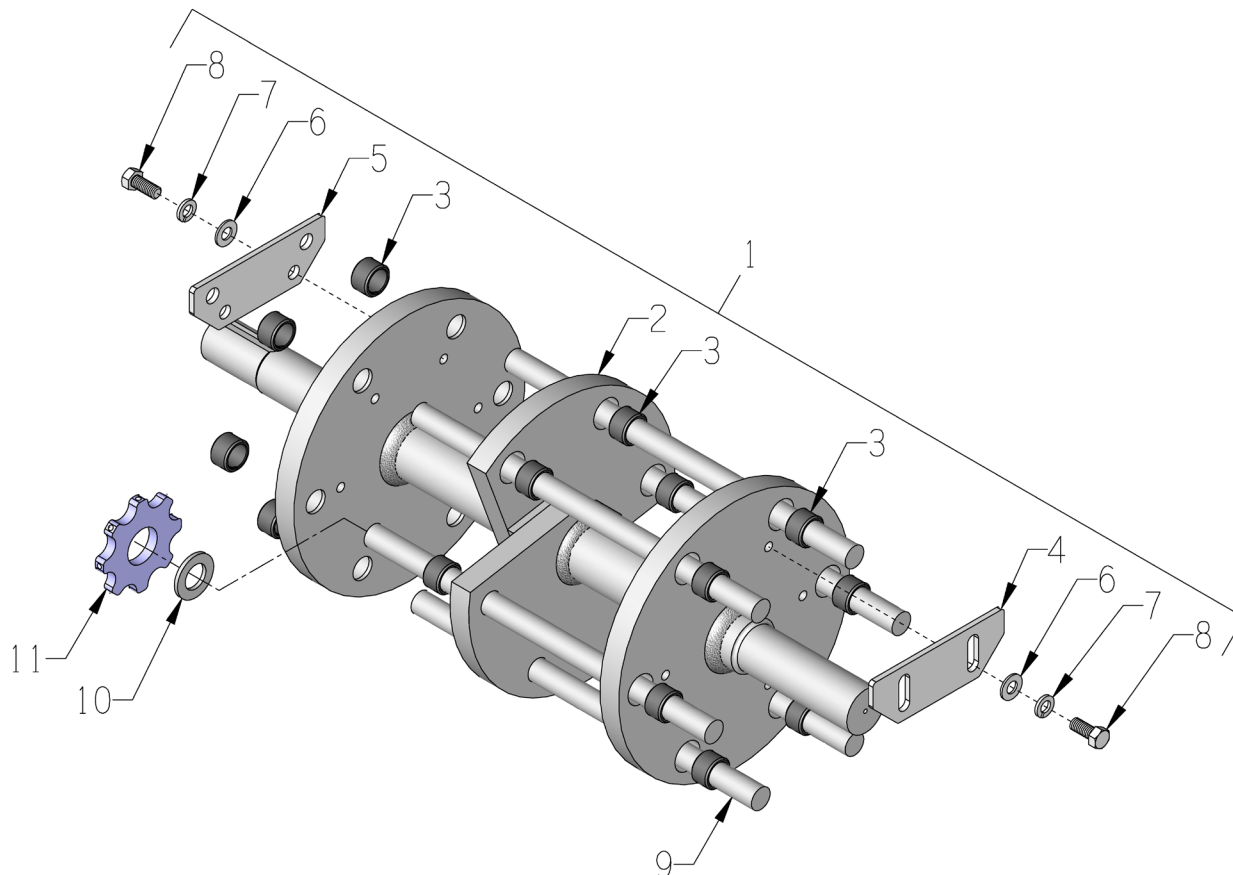
ITEM #	PART #	DESCRIPTION	QTY.
1	10711A	VALVE & HOSE CONNECTOR ASSY.	1
2	50077	BARB, 3/8HOSE X 1/2MPT	1
3	10714	CLAMP, HOSE, SAE #4, ADJ. TO 5/8"	2
4	61220	HOSE 3/8"ID X 40-1/2"L, CPU-12	1
5	50075	BARB, 3/8 HOSE X 1/4MPT (BRASS)	1
6	80029	NOZZLE, SPRAY 1/4NPT (BRASS)	1

ILLUSTRATION 8: BEARING GROUPING FOR CUTTER DRUM



ITEM #	PART #	DESCRIPTION	QTY.
1	61235	BEARING, ROLLER 1-1/2" 3-HOLE CPU12 FB22424EHC (INCLUDES ITEM 2 - STEEL CAP)	1
2	61237	BEARING STEEL CAP, CPU-12	1
3	61236	BEARING, ROLLER 1-1/2" 3-HOLE CPU12 FB22424EH	1
4	61247	BEARING STEEL FLINGER, CPU-12	1
5	61238	BEARING DUST SHIELD W/SEAL, CPU-12	2
6	10308	SCREW, CAP 1/2-20 X 1-1/2	6
7	10312	WASHER, FLAT 1/2 SAE ZINC	12
8	10205	NUT, HEX LOCK 1/2-20 ZINC	6
9	61239	RUBBER SEAL 1-3/4"SQ, CPU-12	2

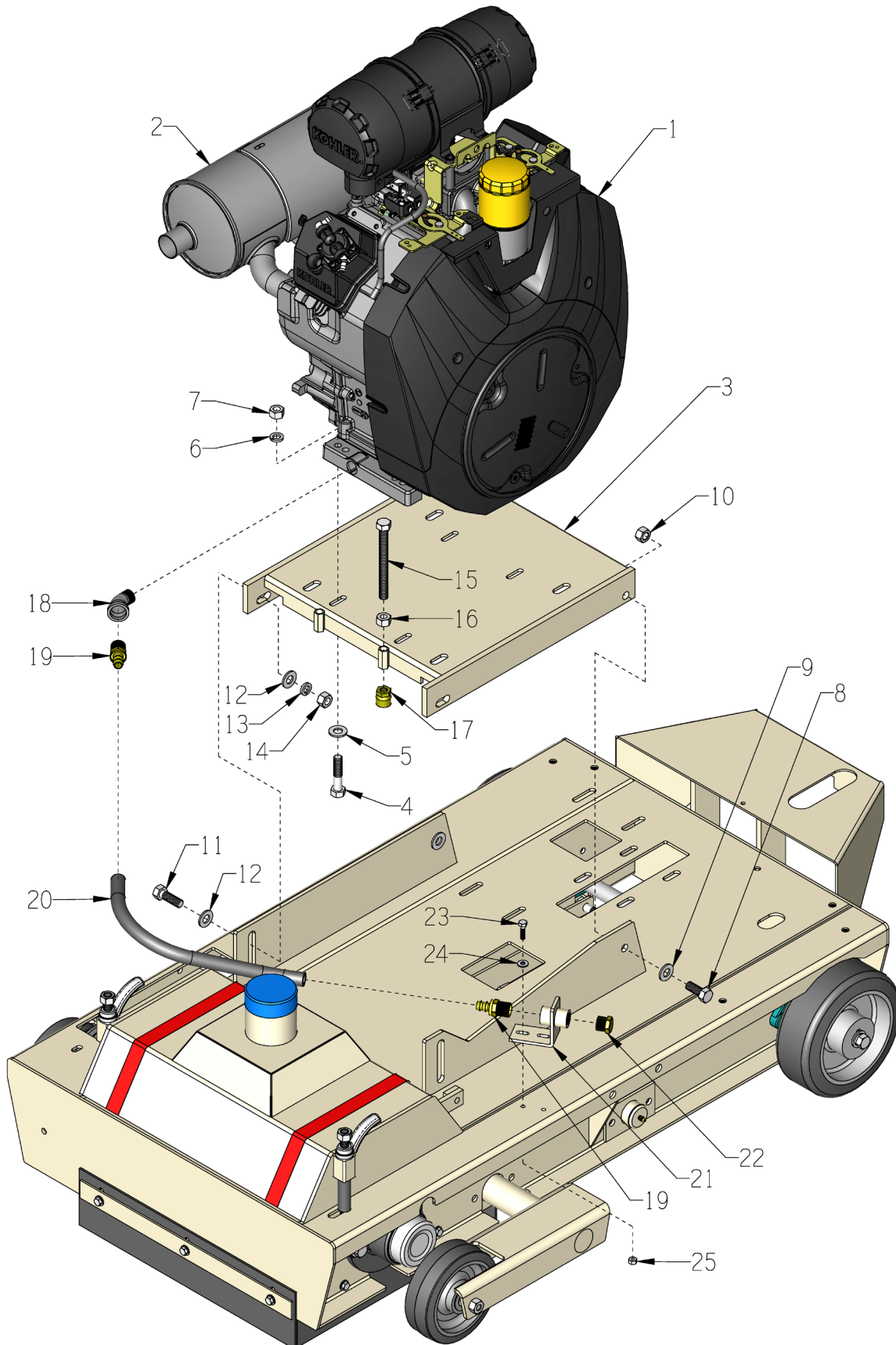
ILLUSTRATION 9: CUTTER DRUM ASSEMBLY



ITEM #	PART #	DESCRIPTION	QTY.
1	61320	DRUM ASSY. COMP. CPU-12 CUTTER (INCLUDES ITEMS 2 THRU 8)	1
2	61321	DRUM ONLY, CPU-12 CUTTER	1
3	84063	BUSHING, DRUM, HARDENED STL 3/4"ID	18
4	61234	RETAINING PLATE, CUTTER SHAFT (2 SLOT)	3
5	61249	RETAINING PLATE, CUTTER SHAFT (4 HOLE)	3
6	10025	WASHER, FLAT 3/8 SAE ZINC	12
7	10811	WASHER, LOCK 3/8 ZINC	12
8	10912	SCREW, CAP 3/8-16 X 7/8 (GRADE 8)	12
9	20010	CP412 SHAFT 3/4 X 13-5/8, CPU-12	6*
10	20060	CP403 SPACER, HARDENED STEEL	*SEE NOTE
11	20136 20056 20086	CUTTER WHEELS: CP408TV CARBIDE 3-1/8"OD X 1-3/16"ID X 5/16"THK 8-POINTS CP405P POINTED STEEL 3"OD X 1"ID X 3/16"THK 18-TEETH CP405 FLAT TIP STEEL 3"OD X 1"ID X 3/16"THK 15-TEETH	*SEE NOTE

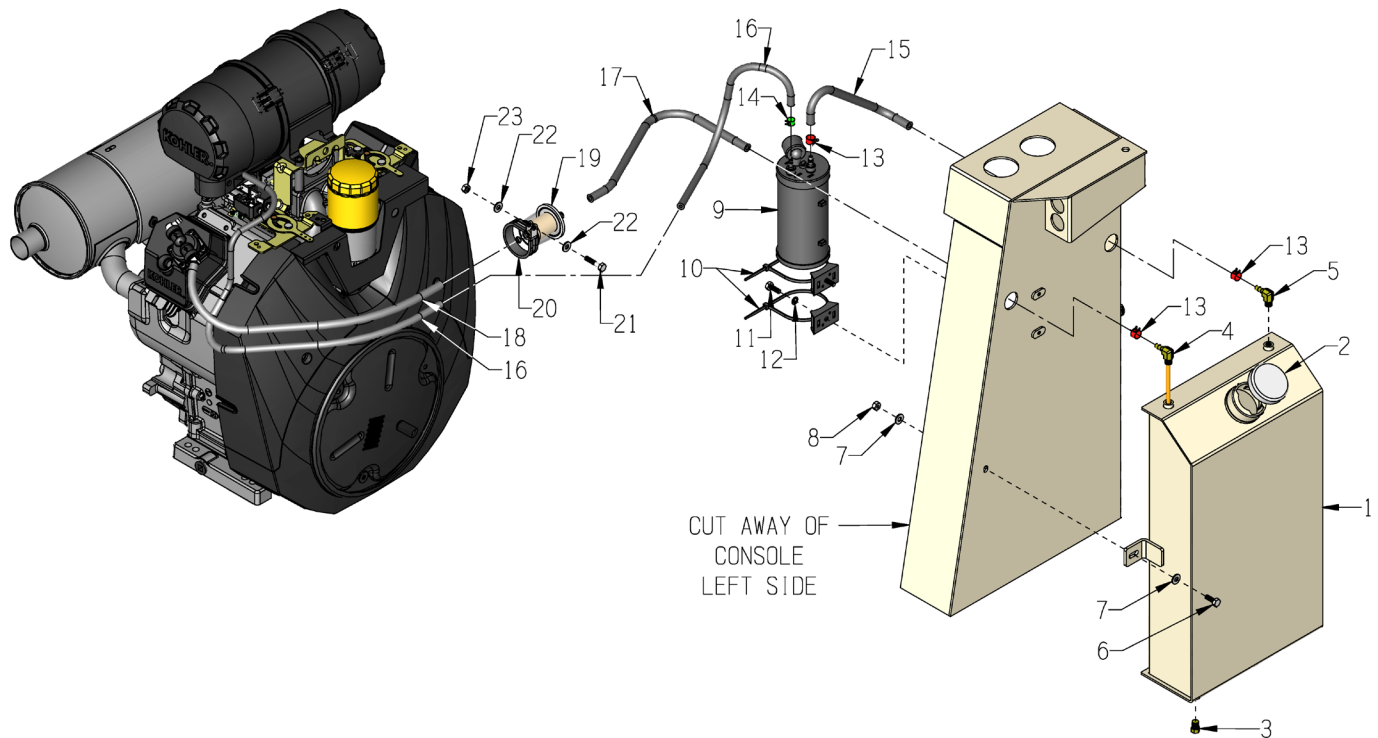
***NOTE:**

CUTTER WHEELS, SPACERS AND SHAFTS ARE NOT INCLUDED WITH THE DRUM ASSEMBLY. THE NUMBER OF CUTTER WHEELS AND SPACERS VARY WITH THE TYPE OF SET-UP USED. REFER TO ASSEMBLY INSTRUCTIONS FOR SUGGESTED SET-UPS AND QUANTITIES.

ILLUSTRATION 10: ENGINE & MOUNT GROUPING

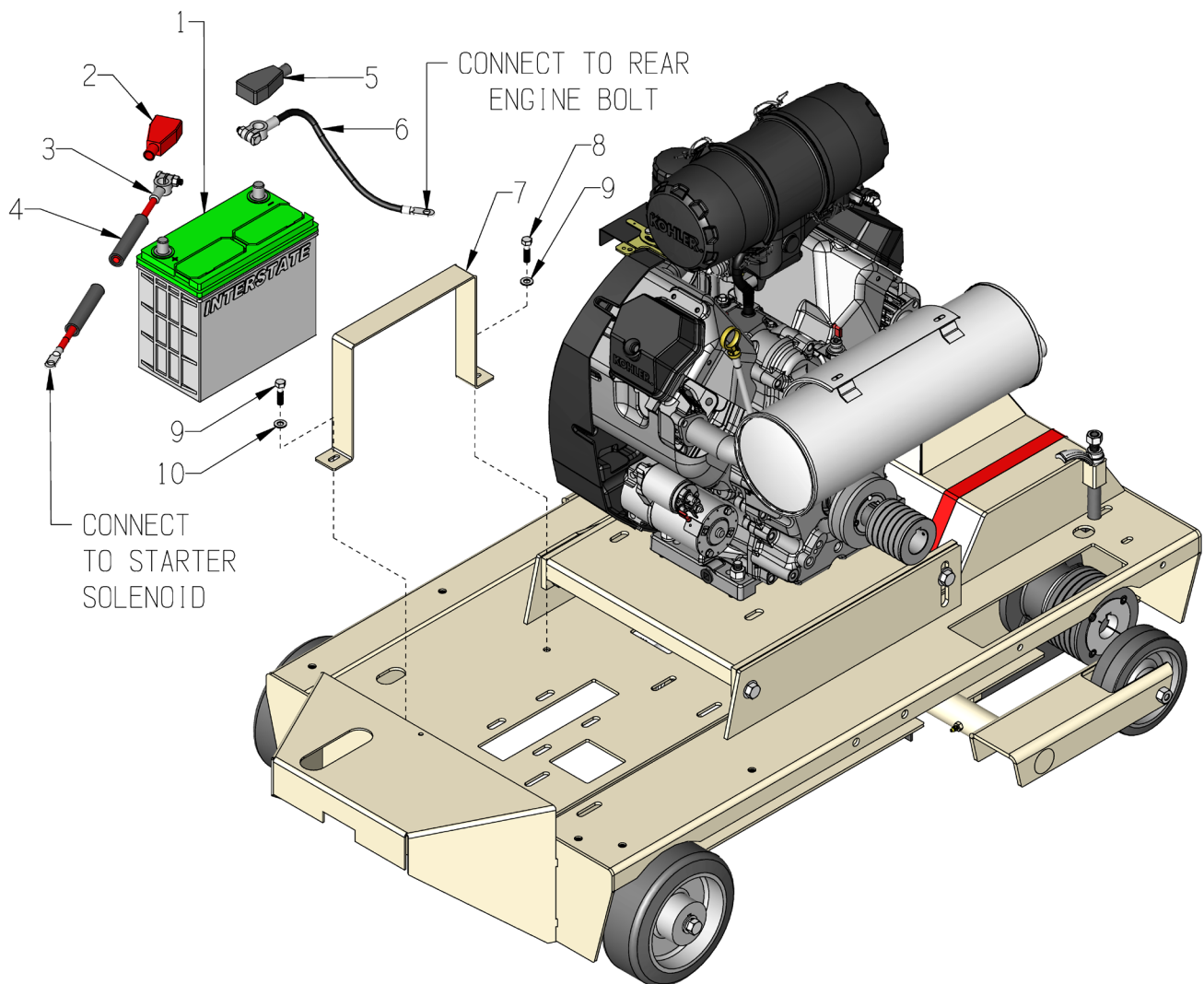
PARTS LISTING ILLUSTRATION 10: ENGINE & MOUNT GROUPING			
ITEM #	PART #	DESCRIPTION	QTY.
1	15070	ENGINE, KOHLER 35HP COMMAND PRO	1
	15244	AIR FILTER REPLACEMENTS:	1
	15245	ELEMENT, AIR FILTER - PRIMARY 35K (OUTER) ELEMENT, AIR FILTER - SECONDARY 35K (INNER)	1
2	15073	MUFFLER KIT, KOHLER 6278603-S	
3	61301	MOUNT, ENGINE, CPU12-35K	1
4	10364	BOLT, CARRIAGE 3/8-16 X 2 GRADE 5	4
5	10025	WASHER, FLAT 3/8 SAE ZINC	4
6	10811	WASHER, LOCK 3/8 ZINC	4
7	10404	NUT, HEX 3/8-16 ZINC	4
8	10321	SCREW, CAP 1/2-20 X 1-1/4	2
9	10312	WASHER, FLAT 1/2 SAE ZINC	2
10	10205	NUT, HEX LOCK 1/2-20 ZINC	2
11	10356	SCREW, CAP 1/2-13 X 1-1/2	2
12	10312	WASHER, FLAT 1/2 SAE ZINC	4
13	10045	WASHER, LOCK 1/2 ZINC	2
14	10417	NUT, HEX 1/2-13 ZINC	2
15	10373	BOLT, TAP 1/2-13 X 5 (FULL THREAD)	2
16	10417	NUT, HEX 1/2-13 ZINC	2
17	50710	TOGGLE PAD 7/8"D X 15/16"H X 1/2-13	2
18	10734	ELBOW, STREET 1/2NPT X 45 (BLACK)	1
19	80061	BARB, PUSH-ON 1/2HOSE X 1/2MPT	2
20	61317	HOSE, PUSH-ON 1/2"ID X 16"L	1
21	57159	BRACKET, OIL DRAIN	1
22	50552	PIPE PLUG 1/2 NPT (BRASS)	1
23	10018	SCREW, CAP 1/4-20 X 3/4	2
24	10602	WASHER, FLAT 1/4 SAE ZINC	2
25	10861	NUT, KEPS LOCK 1/4-20 ZINC	2

ILLUSTRATION 11: FUEL TANK GROUPING



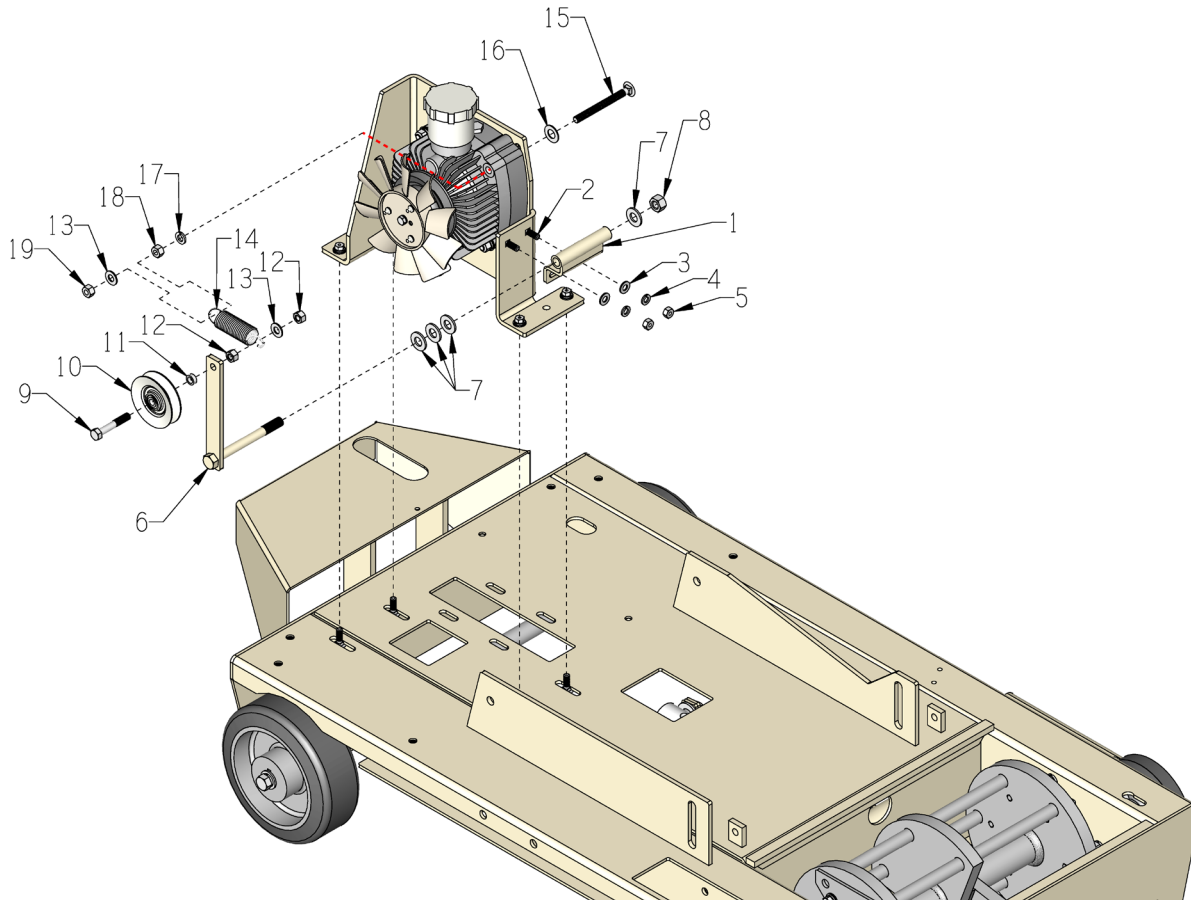
ITEM #	PART #	DESCRIPTION	QTY.
1	61055	TANK, FUEL 3 GAL., CPU-12	1
2	61081	CAP, FUEL TANK W/ VITON GASKET	1
3	11650	PIPE PLUG 1/8 NPT (BRASS)	1
4	61058	TUBE, FUEL PICK-UP 19"	1
5	10771	BARB ELBOW 90, 1/4HOSE X 1/8MPT	1
6	10018	SCREW, CAP 1/4-20 X 3/4	3
7	10602	WASHER, FLAT 1/4 SAE ZINC	6
8	10861	NUT, KEPS LOCK 1/4-20 ZINC	3
9	51298	CANISTER, CARBON 468935A FOR KOHLER	1
10	10982	TIE, CABLE, BLACK NYLON 11-1/4"	2
11	10018	SCREW, CAP 1/4-20 X 3/4	2
12	10451	WASHER, LOCK, INT. TOOTH 1/4"	2
13	10763	CLAMP, HOSE, SPRING-BAND 7/16"	6
14	10762	CLAMP, HOSE, SPRING-BAND 3/8" GREEN	2
15	10948	TUBING, EVAP LOW PERM. FUEL 1/4"ID X 15"	1.25
16	15259	TUBING, EVAP LOW PERM. FUEL 3/16"ID X 41"	3.42
17	10948	TUBING, EVAP LOW PERM. FUEL 1/4"ID X 20"	1.67
18	10948	TUBING, EVAP LOW PERM. FUEL 1/4"ID X 22"	1.83
19	15116	FILTER, FUEL 1/4" IN LINE	1
20	11566	CLAMP, LOOM, 1-5/8"	1
21	10031	SCREW, CAP 1/4-20 X 1	1
22	10602	WASHER, FLAT 1/4 SAE ZINC	2
23	10861	NUT, KEPS LOCK 1/4-20 ZINC	1

ILLUSTRATION 12: BATTERY GROUPING



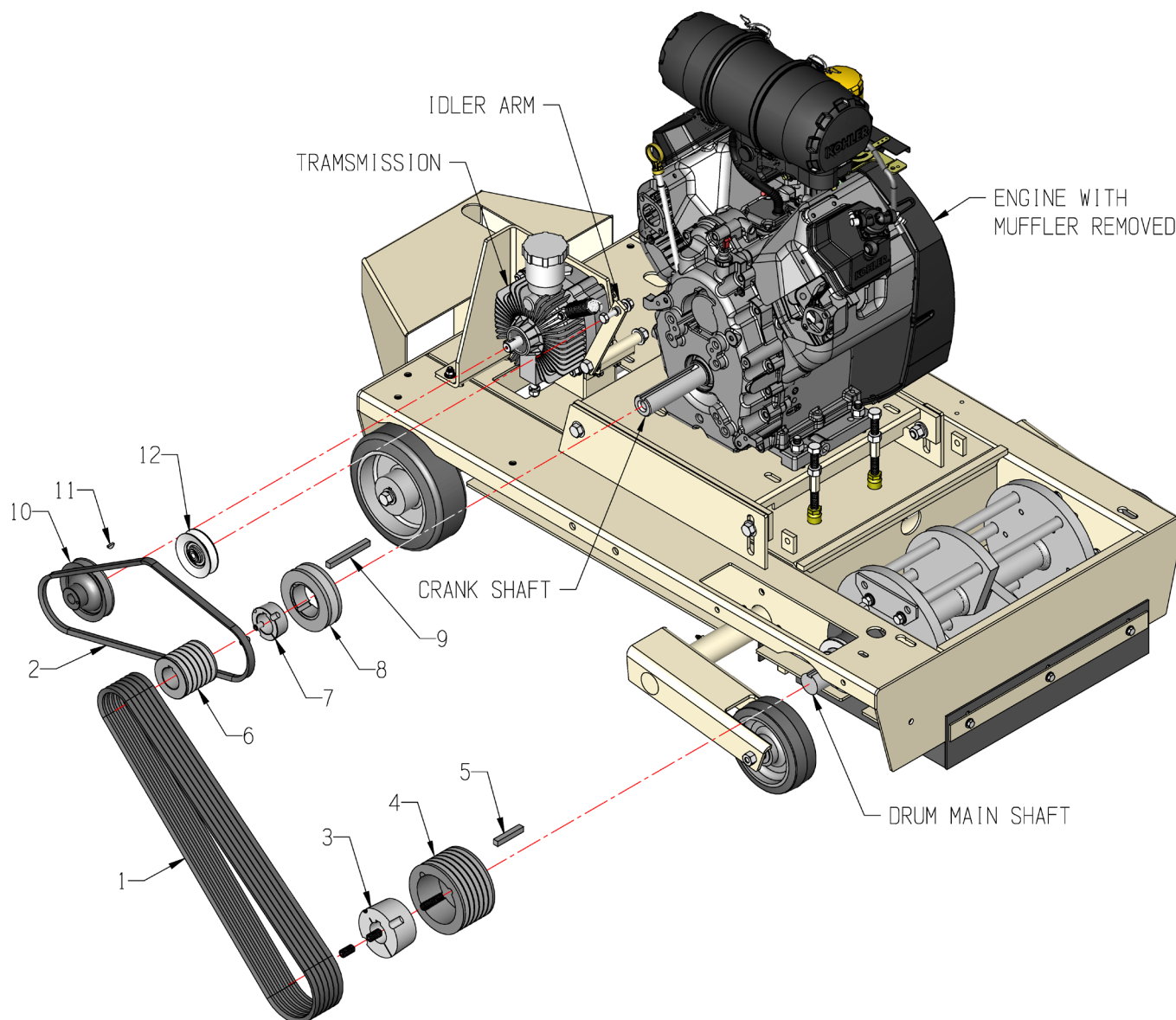
ITEM #	PART #	DESCRIPTION	QTY.
1	50321	BATTERY 12 VOLT/500 CCA(POST TERM.)	1
2	10928	INSULATOR, BAT.TERM.POST (RED)	1
3	61310	CABLE, BATTERY 4GA. X 17" (RED)	1
4	61375	LOOM, FLEX 5/8 X 19"L, CPU12-35K	1
5	10929	INSULATOR, BAT.TERM.POST (BLACK)	1
6	50323B	CABLE, BATTERY 4GA. X 12" (BLACK)	1
7	61252	STRAP, BATTERY HOLD-DOWN, CPU-12	1
8	10606	SCREW, CAP 5/16-18 X 1-1/4	2
9	11861	WASHER, LOCK, INT./EXT. TOOTH 5/16"	2

ILLUSTRATION 13: IDLER ARM GROUPING FOR TRANSMISSION BELT



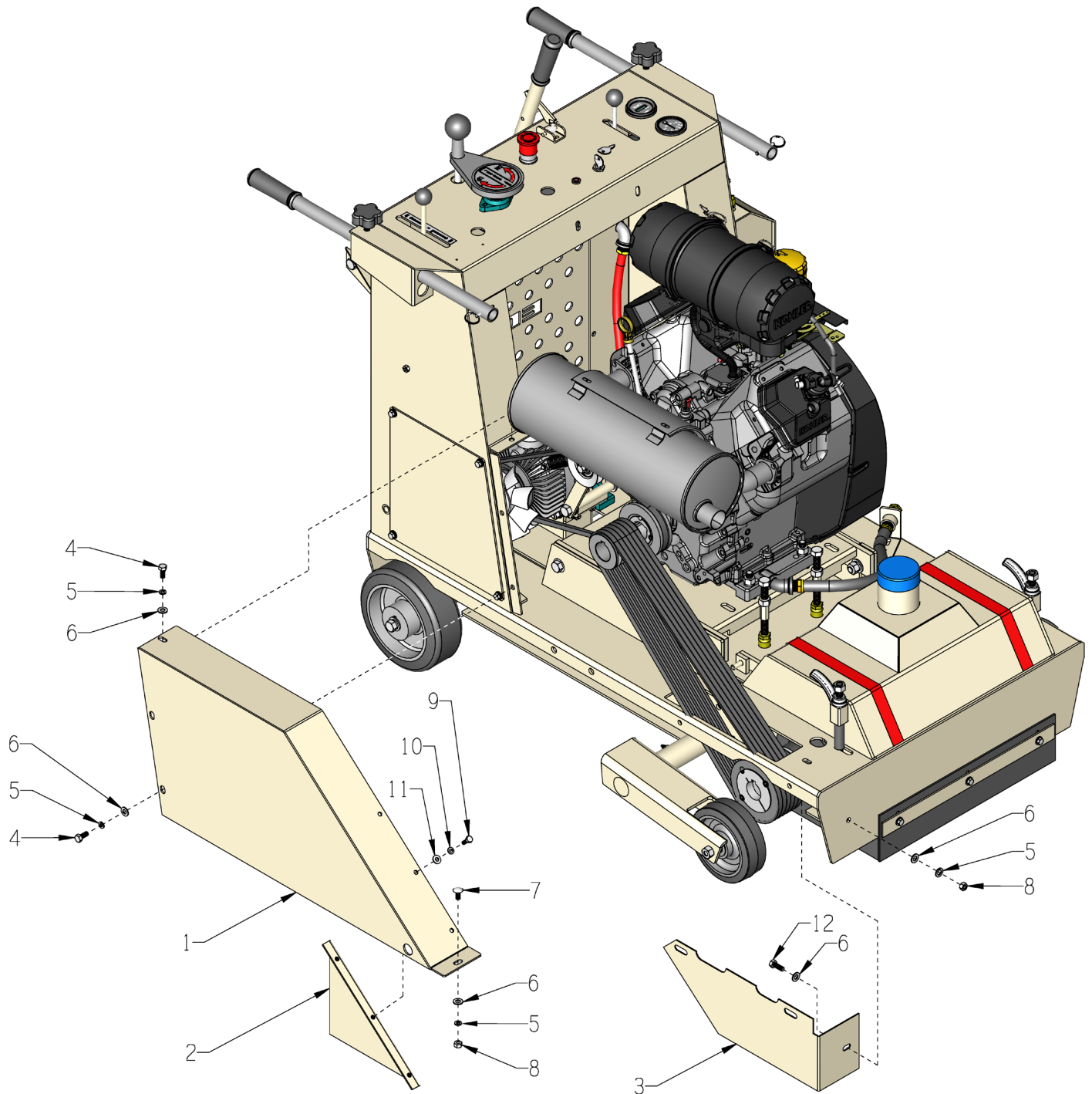
ITEM #	PART #	DESCRIPTION	QTY.
1	61254	IDLER ARM MOUNT BRKT., CPU12-35K	1
2	10819	BOLT, CARRIAGE 5/16-18 X 1 FULL THD	2
3	10213	WASHER, FLAT 5/16 SAE ZINC	2
4	10801	WASHER, LOCK 5/16 ZINC	2
5	10054	NUT, HEX 5/16-18 ZINC	2
6	61253	IDLER ARM, CPU12-35K	1
7	10312	WASHER, FLAT 1/2 SAE ZINC (*USE AS REQ'D.)	4*
8	10205	NUT, HEX LOCK 1/2-20 ZINC	1
9	10336	SCREW, CAP 3/8-24 X 2-1/4	1
10	50115	IDLER PULLEY 3"OD X 1GR.AB X 3/8"B	1
11	10113	SPACER, STEEL 9/16OD X 3/8ID X 7/32	1
12	10004	NUT, HEX LOCK 3/8-24 ZINC	2
13	10025	WASHER, FLAT 3/8 SAE ZINC	2
14	50074	SPRING, EXT. 1"OD X 3-15/16	1
15	10910	BOLT, CARRIAGE 3/8-16 X 4" F.T.	1
16	10040	WASHER, GARRET 17/32 X 1 X .054	1
17	10811	WASHER, LOCK 3/8 ZINC	1
18	10404	NUT, HEX 3/8-16 ZINC	1
19	10810	NUT, HEX LOCK 3/8-16 ZINC	1

ILLUSTRATION 14: BELT DRIVE GROUPING



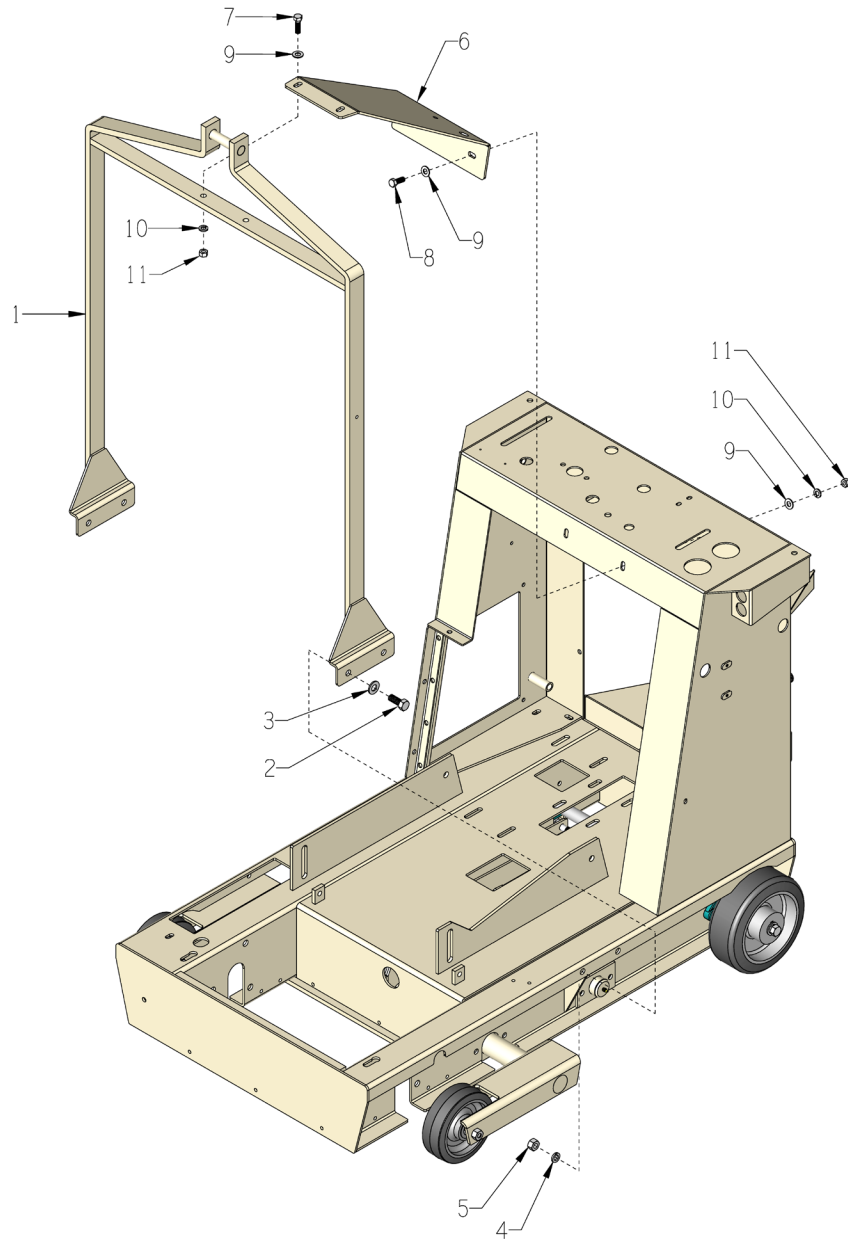
ITEM #	PART #	DESCRIPTION	QTY.
1	10231	BELT 3VX-500	6
2	61308	BELT AP-41	1
3	61316	BUSHING, TAPER-LOCK 2517 1-7/16" B	1
4	61315	SHEAVE 4.75" OD X 6GR.3V TAPER-LOCK	1
5	10118	KEY 3/8SQ X 2-1/4	1
6	10510	SHEAVE 2.8" OD X 6GR.3V X 1-7/16" B	1
7	10531	BUSHING, TAPER-LOCK 1610 1-7/16" B	1
8	10528	SHEAVE 4.15" OD X 1GR.AB X TPR-LOCK	1
9	10074	KEY 3/8SQ X 3-1/2	1
10	50062	SHEAVE, TRANS. 4" OD X 1GR. X .671" B	1
11	50071	KEY, WOODRUFF 1/8 X 1/2 (SAE #3)	1
12	50115	IDLER PULLEY 3" OD X 1GR.AB X 3/8" B	1

ILLUSTRATION 15: BELT COVER GROUPING



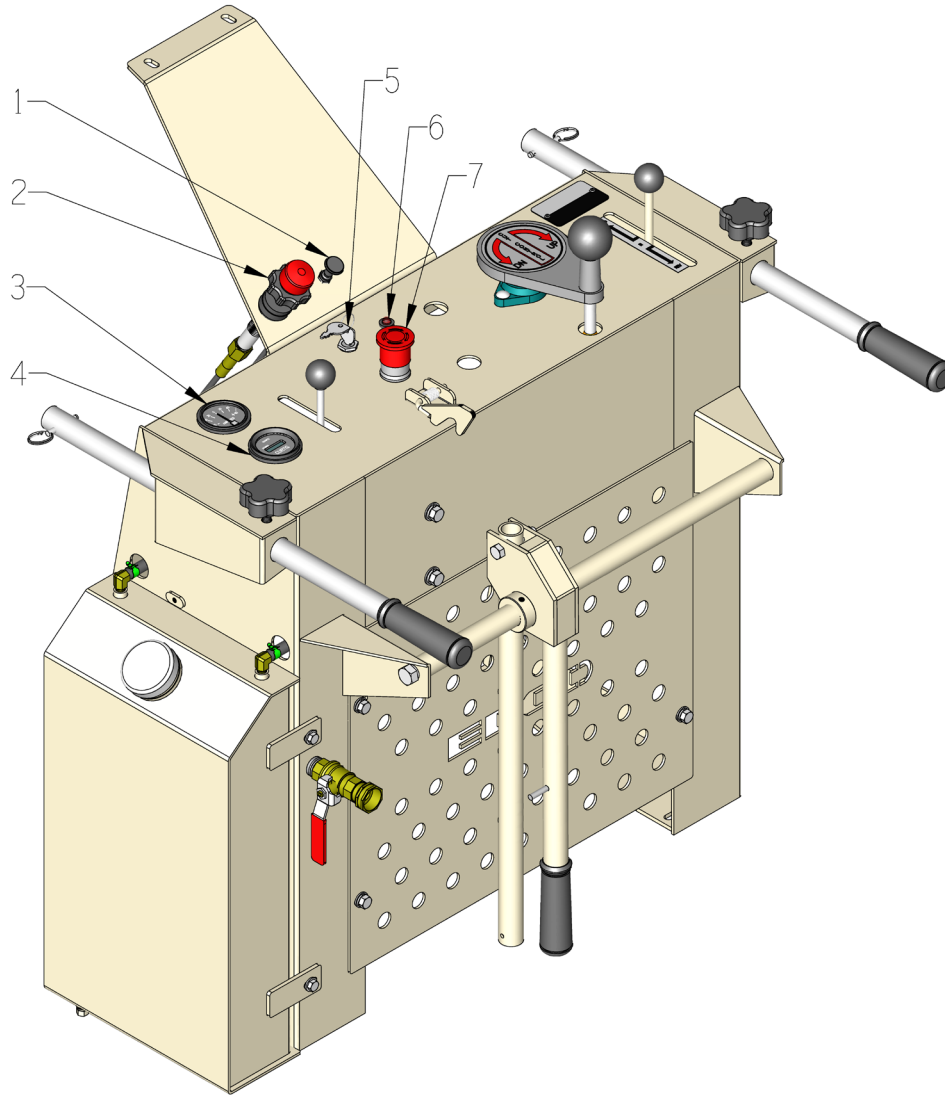
PARTS LISTING			
ILLUSTRATION 15: BELT COVER GROUPING			
ITEM #	PART #	DESCRIPTION	QTY.
1	61204K	COVER, BELT, CPU12-35K	1
2	61374	GUARD INNER PANEL, BELT, CPU12-35K	1
3	61211	GUARD, LOWER PULLEY, CPU-12	1
4	10053	SCREW, CAP 5/16-18 X 3/4	3
5	10801	WASHER, LOCK 5/16 ZINC	7
6	10213	WASHER, FLAT 5/16 SAE ZINC	8
7	10818	BOLT, CARRIAGE 5/16-18 X 3/4	1
8	10054	NUT, HEX 5/16-18 ZINC	2
9	10018	SCREW, CAP 1/4-20 X 3/4	3
10	10038	WASHER, LOCK 1/4 ZINC	3
11	10602	WASHER, FLAT 1/4 SAE ZINC	3
12	10806	SCREW, CAP 5/16-18 X 1	3

ILLUSTRATION 16: LIFTING BAIL GROUPING



ITEM #	PART #	DESCRIPTION	QTY.
1	61302E	BAIL, LIFTING, CPU12-15L	1
2	10321	SCREW, CAP 1/2-20 X 1-1/4	4
3	10312	WASHER, FLAT 1/2 SAE ZINC	4
4	10045	WASHER, LOCK 1/2 ZINC	4
5	10072	NUT, HEX 1/2-20 ZINC	4
6	61303K	SUPPORT, LIFTING BAIL, CPU12-35K	1
7	10309	SCREW, CAP 3/8-24 X 1-1/4 ZINC	2
8	10021	SCREW, CAP 3/8-24 X 1	2
9	10025	WASHER, FLAT 3/8 SAE ZINC	6
10	10811	WASHER, LOCK 3/8 ZINC	4
11	10014	NUT, HEX 3/8-24 ZINC	4

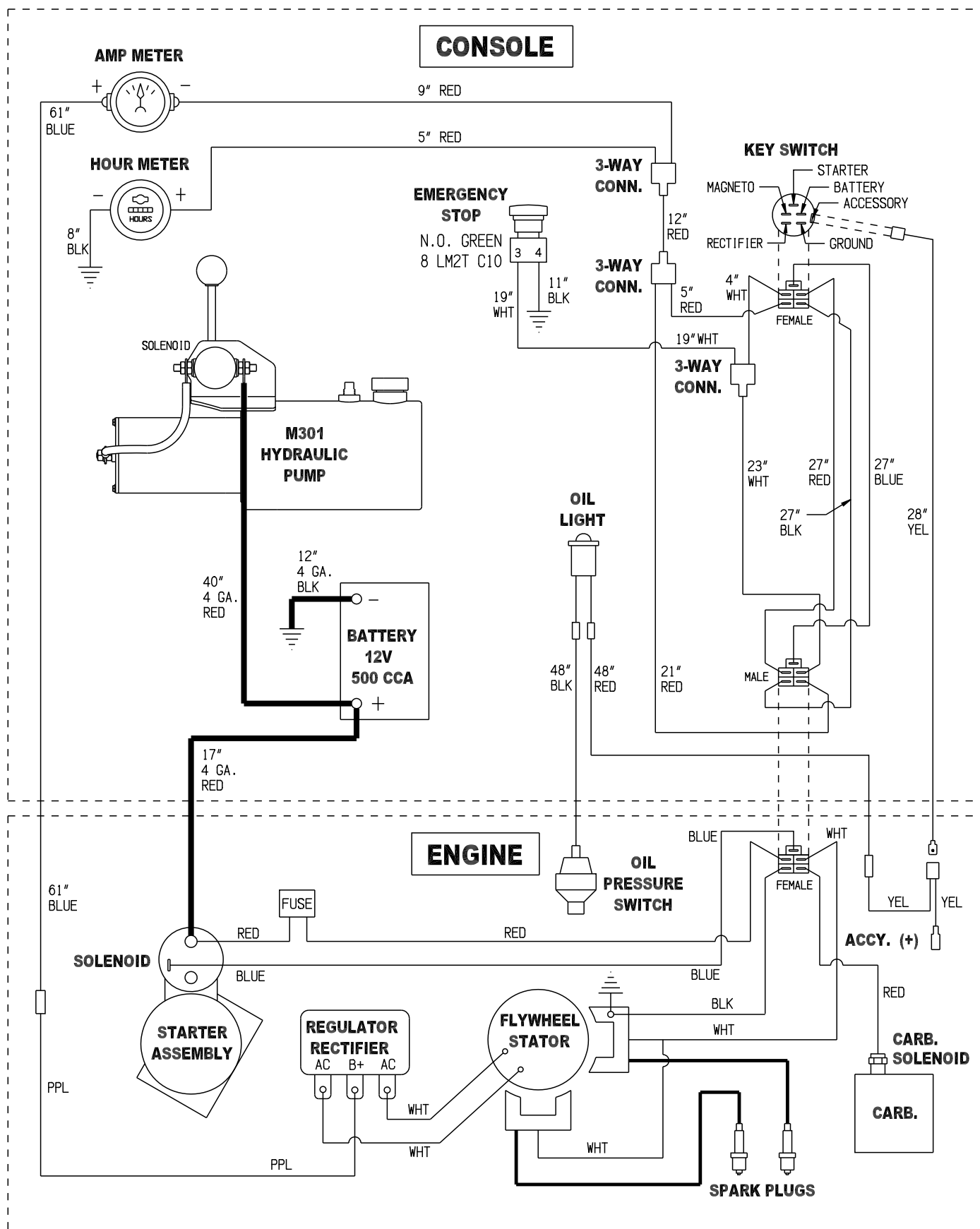
ILLUSTRATION 17: INSTRUMENT GROUPING



ITEM #	PART #	DESCRIPTION	QTY.
1	15129	CABLE, CHOKE CONTROL 72"	1
2	50560	CABLE, VERNIER ADJ. LOCKING CONTROL	1
3	10631	AMMETER, 60 AMP (60-0-60)	1
4	10637	METER, HOUR 2-1/16"	1
5	15266	SWITCH, KEY, KOHLER 25 099 29-S	1
6	15264	LAMP, OIL PRESSURE, RED KOHLER 25 352 21-S	1
7	15275-G	SWITCH, E-STOP W/ GREEN N.O.CONTACT INCLUDES:	1
	15275	PUSHBUTTON, TURN TO RELEASE E-STOP	1
	15276	MOUNTING ADAPTER, PUSHBUTTON	1
	15277	CONTACT ELEMENT, NO GREEN LM2TC10	1

THIS PAGE WAS LEFT BLANK INTENTIONALLY

WIRING DIAGRAM



DECAL SHEET 1

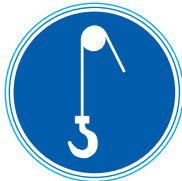
P/N 92225-1 RevC

CPU-12

14x17



WARNING: Cancer and Reproductive Harm.
For more information, go to www.P65Warnings.ca.gov



CHOKE

exceeds 85dBA

CHECK OIL DAILY



GASOLINE

WATER
HOOKUP

DOWN
↑
BLADE
LIFT
↓
UP

FWD
↑
N
↓
REV

THROTTLE



YOU MUST READ OPERATOR'S INSTRUCTION MANUAL BEFORE OPERATING

RENTAL-TOUGH

DECAL SHEET 2

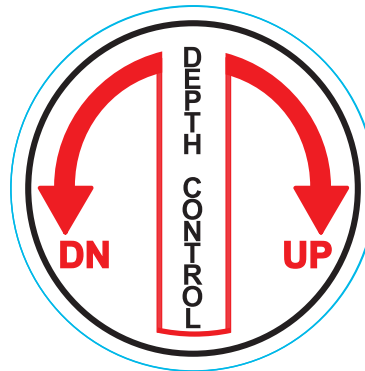
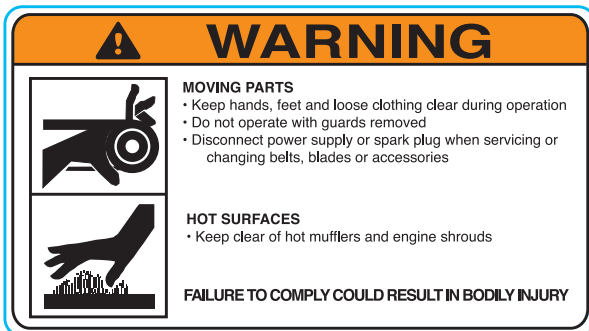
P/N 92225-2

CPU-12

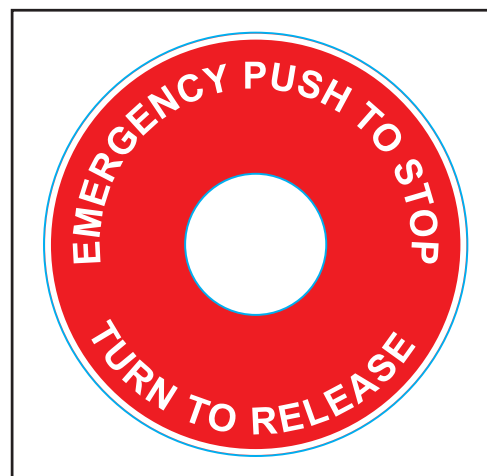
14x8

**IMPORTANT!**

**CUTTER DRUM
SHAFT BEARINGS
MUST BE
LUBRICATED
EVERY 4 HOURS**



DECAL P/N 91344



THIS PAGE WAS LEFT BLANK INTENTIONALLY

LIMITED EQUIPMENT WARRANTY OF SALE

Equipment Development Company, Inc. herein referred to as EDCO (Seller) warrants that each new unit manufactured by EDCO to be free from defects in material and workmanship in normal use and service for a period of (1) one year (except for the cutter drum assembly on all model concrete/asphalt planers AND the chisel head assembly on all model ALR's & ALR-BS in which case the warranty period shall be 90 days) from date of shipment to the original retail or equipment rental center owner.

Accessories or equipment furnished and installed on the product by EDCO but manufactured by others, including, but not limited to engines, motors, electrical components, transmissions etc., shall carry the accessory manufacturers own warranty.

EDCO will, at its option, repair or replace, at the EDCO factory or at a point designated by EDCO, any part which shall appear to the satisfaction of EDCO inspection to have been defective in material or workmanship.

EDCO reserves the right to modify, alter and improve any part or parts without incurring any obligation to replace any part or parts previously sold without such modified, altered or improved part or parts.

This warranty is in lieu of and excludes all other warranties, expressed, implied, statutory, or otherwise created under applicable law including, but not limited to the warranty of merchantability and the warranty of fitness for a particular purpose in no event shall seller or the manufacturer of the product be liable for special, incidental, or consequential damages, including loss of profits, whether or not caused by or resulting from the negligence of seller and/or the manufacturer of the product unless specifically provided herein. In addition, this warranty shall not apply to any products or portions thereof which have been subjected to abuse, misuse, improper installation, maintenance, or operation, electrical failure or abnormal conditions and to products which have been tampered with, altered, modified, repaired, reworked by anyone not approved by seller or used in any manner inconsistent with the provisions of the above or any instructions or specifications provided with or for the product.

TERMS AND CONDITIONS (NOT APPLICABLE TO SALES THROUGH AUTHORIZED DISTRIBUTION)

FORCE MAJEURE

Seller's obligation hereunder are subject to, and Seller shall not be held responsible for, any delay or failure to make delivery of all or any part of the Product due to labor difficulties, fires, casualties, accidents, acts of the elements, acts of God, transportation difficulties, delays by a common carrier, inability to obtain Product, materials or components or qualified labor sufficient to timely perform part of or all of the obligations contained in these terms and conditions, governmental regulations or actions, strikes, damage to or destruction in whole or part of manufacturing plant, riots, terrorist attacks or incidents, civil commotions, warlike conditions, flood, tidal waves, typhoon, hurricane, earthquake, lightning, explosion or any other causes, contingencies or circumstances within or without the United States not subject to the Seller's control which prevent or hinder the manufacture or delivery of the Products or make the fulfillment of these terms and conditions impracticable. In the event of the occurrence of any of the foregoing, at the option of Seller, Seller shall be excused from the performance under these Terms and Conditions, or the performance of the Seller shall be correspondingly extended.

This document sets forth the terms and conditions pursuant to which the purchaser ("Purchaser") will purchase and Equipment Development Co. Inc. ("Seller") will sell the products, accessories, attachments (collectively the Products) ordered by the Purchaser. These terms and conditions shall govern and apply to the sale of Seller's Products to Purchaser, regardless of any terms and conditions appearing on any purchase order or other forms submitted by Purchaser to Seller, or the inconsistency of any terms therein and herein.

1. PRICE

All prices set forth on any purchase order or other document are F.O.B. Seller's facility or distribution point, as may be determined by Seller (F.O.B. Point). All prices are exclusive of any and all taxes, including, but not limited to, excise, sales, use, property or transportation taxes related to the sale or use of the Products, now or hereafter imposed, together with all penalties and expenses. Purchaser shall be responsible for collecting and/or paying any and all such taxes, whether or not they are stated in any invoice for the Products. Unless otherwise specified herein, all prices are exclusive of inland transportation, freight, insurance and other costs and expenses relating to the shipment of the Products from the F.O.B. point to Purchaser's facility. Any prepayment by Seller of freight insurance and other costs shall be for the account of Purchaser and shall be repaid to Seller.

2. PAYMENT TERMS

Payment terms are as follows. 2% 10 days (to approved and qualified accounts). Net 30 days. This is a cash discount for invoices paid within 10 days after the invoice date, regardless of date of receipt of shipment. This is not a trade discount and will not be granted to accounts that do not adhere to stated terms.

*All past due accounts are subject to a late payment fee of 1.5% per month or a maximum allowed by law if different, along with the expenses incidental to collection including reasonable attorney's fees and costs.

*Seller reserves the right to hold shipments against past due accounts.

*Seller reserves the right to alter payment terms.

3. FREIGHT TERMS

All shipments will be made F.O.B. shipping point as designated in these Terms and Conditions, and title shall pass at the F.O.B. point. Delivery to the initial common carrier shall constitute delivery to the Purchaser. Any claims for loss or damage during shipment are to be filed with carrier by the Purchaser. Seller will not assume responsibility for the performance of the carrier.

Back orders will be shipped in the most practical fashion with charges consistent with our freight policy established with the original order. UPS, FED EX, MAIL or shipments by other couriers are subject to the same terms and conditions as outlined in paragraph #3 "Freight Terms".

4. DELIVERY, DAMAGES, SHORTAGES

Seller shall use reasonable efforts to attempt to cause the Products to be delivered as provided for in these Terms & Conditions. Delivery to the initial common carrier shall constitute the delivery to the Purchaser. Seller's responsibility, in so far as transportation risks are concerned ceases upon the delivery of the Products in good condition to such carrier at the F.O.B. point and all the Products shall be shipped at the Purchaser's risk. Seller shall not be responsible or liable for any loss of income and/or profits, or incidental, special, consequential damages resulting from Seller's delayed performance in shipment and delivery.

5. RETURN OF DEFECTIVE PRODUCTS

Defective or failed material shall be held at the Purchaser's premises until authorization has been granted by Seller to return or dispose of Products. Products that are to be returned for final inspection must be returned Freight Prepaid in the most economical way. Credit will be issued for material found to be defective upon Seller's inspection based on prices at time of purchase.

6. PRODUCTS ORDERED IN ERROR

Products may be returned, provided that claim is made and Seller is notified within 7 days of receipt of Products, and the Products are in original buyer's possession not more than 30 days prior to return, subject to Seller's approval. If Products are accepted for return, they must be Freight Prepaid and buyer will be charged a minimum of 15% restocking charge, plus a charge back for outbound freight charges if the original order was shipped prepaid. Returns are not accepted for any Products that are specifically manufactured to meet the buyer's requirement of either specifications or quantity.

AGREEMENTS

These Terms and Conditions constitute the entire agreement between Seller and Purchaser as it relates to terms and conditions of sale, and supersedes any and all prior oral or written agreements, correspondence, quotations or understandings heretofore in force between the parties relating to the subject matter hereof. There are no agreements between Seller and Purchaser with respect to the Product herein except those specifically set forth in and made part of these terms and conditions. Any additional terms, conditions and/or prices are rejected by Seller.

These terms and conditions may be modified, cancelled or rescinded only by a written agreement of both parties executed by their duly authorized agents.

USE ONLY GENUINE EDCO PARTS & ACCESSORIES

For your own safety, the safety of others and the life of your machine.

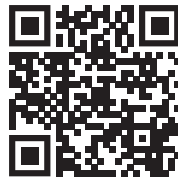
SUBMIT ALL WARRANTY CLAIMS AT:

edcoinc.com/customer-support/warranty-claim-request/



BEFORE USING THIS PRODUCT

Have You Used EDCO's Online Customer Support??



Scan This QRC or Visit
www.edcoinc.com/customer-support



READ: **EDCO Owner's Manuals and Parts Listings** share basic information and parts of each product. Download and print them whenever needed.



WATCH: **EDCO Product Training Videos** show how to use products, install tooling, and perform basic maintenance.



Example Only

FIND: Somewhere on this product is an **EDCO QRC Training Decal**. Scanning this code provides owner's information, videos, and other training content anywhere/anytime on your mobile device.



CONCRETE KNOWLEDGE

JOIN: **EDCOed.com** is a free, 24-hour training space. Each certification track focuses on a specific EDCO product group. The information in these tracks help businesses be successful with those products.

EDCO is always updating online training / information so you always have the most recent content.

Also see Operator's Safety & Limited Warranty Manual

Equipment Development Co., Inc. • 800.638.3326 • techsupport@edcoinc.com